



“NETWORK OF DANUBE WATERWAY ADMINISTRATIONS” – data & user orientation

SOUTH EAST EUROPE TRANSNATIONAL COOPERATION PROGRAMME

ATLAS OF BERTH

DANUBE BLACK SEA CANAL AND POARTA ALBA MIDIA NAVODARI CANAL

| | |
|-------------------------|-----------------|
| Document ID | O.4.2.8 |
| Activity | Act.4.2 |
| | |
| Author/organisation | Version/date |
| Severin Anastasie / ACN | V1 / 08.10.2014 |
| | |
| | |



ATLAS OF BERTHS

OVERVIEW LIST OF THE BERTH/MOORING PLACES

ADMINISTRATION OF THE NAVIGABLE CANAL - ROMANIA

| Backwater section (power plant) = name of the river section | River km | | Berth/mooring place (name) | Useable length of the berth in meters | River bank* ¹ | Location of the berth* ² | Construction of the river bank* ³ | Local berth conditions* ⁴ | Width of the berthing area on the water* ⁵ |
|---|----------|--------|---|---------------------------------------|--------------------------|-------------------------------------|--|--------------------------------------|---|
| | From | To | | | | | | | |
| AGIGEA LOCK | 0+890 | 1+290 | MOORING PLACE FOR ENTRANCE IN TO THE LOCK | 400 | L | DL | DO | 0 | 150 |
| AGIGEA LOCK | 0+890 | 1+290 | MOORING PLACE FOR ENTRANCE IN TO THE LOCK | 400 | R | DL | DO | 0 | 150 |
| AGIGEA LOCK | 2+132 | 2+932 | MOORING PLACE FOR ENTRANCE IN TO THE LOCK | 800 | L | UL | QW | 0 | 150 |
| AGIGEA LOCK | 2+132 | 2+932 | MOORING PLACE FOR ENTRANCE IN TO THE LOCK | 800 | R | UL | QW | 0 | 150 |
| BASARABI PORT | 25+085 | 25+460 | MOORING PLACE FOR ENTRANCE IN TO THE PORT | 375 | R | UP | DO | 0 | 150 |
| MEDGIDIA PORT | 36+910 | 37+310 | MOORING PLACE FOR ENTRANCE IN TO THE PORT | 400 | R | DP | DO | 0 | 120 |
| MEDGIDIA PORT | 37+785 | 38+435 | MOORING PLACE FOR ENTRANCE IN TO THE PORT | 650 | R | UP | DO | 0 | 120 |
| CERNAVODA LOCK | 58+883 | 59+683 | MOORING PLACE FOR ENTRANCE IN TO THE LOCK | 800 | L | DL | DO | 0 | 150 |
| CERNAVODA LOCK | 59+283 | 59+683 | MOORING PLACE FOR ENTRANCE IN TO THE LOCK | 400 | R | DL | DO | 0 | 150 |
| CERNAVODA LOCK | 60+525 | 61+225 | MOORING PLACE FOR ENTRANCE IN TO THE LOCK | 700 | L | UL | DO | 0 | 150 |
| CERNAVODA LOCK | 60+525 | 61+325 | MOORING PLACE FOR ENTRANCE IN TO THE LOCK | 800 | R | UL | DO | 0 | 150 |
| NAVODARI LOCK | 1+705 | 1+850 | MOORING PLACE FOR ENTRANCE IN TO THE LOCK | 145 | R | DL | DO | 0 | 90-150 |
| NAVODARI LOCK | 1+705 | 1+850 | MOORING PLACE FOR ENTRANCE IN TO THE LOCK | 145 | L | DL | DO | 0 | 90-150 |
| NAVODARI LOCK | 2+400 | 2+690 | MOORING PLACE FOR ENTRANCE IN TO THE LOCK | 290 | R | UL | DO | 0 | 90-150 |
| OVIDIU LOCK | 11+750 | 12+040 | MOORING PLACE FOR ENTRANCE IN TO THE LOCK | 290 | L | DL | QW | 0 | 90 |
| OVIDIU LOCK | 11+800 | 12+040 | MOORING PLACE FOR ENTRANCE | 240 | R | DL | QW | 0 | 90 |

| | | | | | | | | | |
|-------------|--------|--------|--|-----|---|-----|----|---|-----|
| | | | IN TO THE LOCK | | | | | | |
| OVIDIU LOCK | 12+430 | 12+720 | MOORING PLACE FOR ENTRANCE IN TO THE LOCK | 290 | L | UL | QW | 0 | 90 |
| OVIDIU LOCK | 12+430 | 12+720 | MOORING PLACE FOR ENTRANCE IN TO THE LOCK | 290 | R | UL | QW | 0 | 90 |
| POARTA ALBA | 29+710 | 30+010 | MOORING PLACE FOR ENTRANCE INTO THE POARTA ALBA MIDIA NAVODARI CANAL | 300 | L | ARS | QW | 0 | 120 |

* in meters or max. number of vessels permitted to berth abreast

Explanation

| | | |
|--------------------------|-----|--|
| river bank* ¹ | L | left river bank |
| | R | right river bank |
| | D | at the dam |
| location* ² | DPP | "downstream" side of a power plant |
| | DL | "downstream" side of a lock (lock entrance area) |
| | UL | "upstream" side of a lock (lock entrance area) |
| | UPP | "upstream" side of a power plant |
| | ARS | along the river stretch |

| | | |
|---|-----|---|
| construction (of the river bank) * ³ | SPW | sheet pile wall |
| | E | embankment |
| | QW | quay wall |
| | DA | dam |
| | DO | dolphins |
| | NA | natural (wild) |
| width of the berthing area* ⁵ | X | maximum number of vessels permitted to berth abreast |
| local berth conditions* ⁴ (berthing order) | 0 | berthing permitted (i.e. anchoring or making fast to the bank) |
| | 1 | berthing area reserved for pushing-navigation vessels that are required to carry one blue cone |
| | 2 | berthing area reserved for pushing-navigation vessels that are required to carry two blue cones |
| | 3 | berthing area reserved for pushing-navigation vessels that are required to carry three blue cones |

MAP OF BERTHS

Mooring place for entrance in to the Agigea Lock

Danube km: 0+890 - 1+290

GPS coordinates:

North: 44° 6' 2.86"

East: 28° 37' 40"

berths information

length: 400 m

river bank

- L left river bank
- R right river bank
- T at the dam

location

- DPP "downstream" side of a power plant
- DL "downstream" side of o lock (lock entrance area)
- UL "upstream" side of a lock (lock entrance area)
- UPP "upstream" side of a power plant
- ARS along the river stretch
- OTH others (before a harbour entrance in an old river branch)

local berths conditions

- 0 berthing permitted (i.e. anchoring or making fast to the bank)
- 1 berthing area reserved for pushing-navigation vessels that are required to carry one blue cone
- 2 berthing area reserved for pushing-navigation vessels that are required to carry two blue cones
- 3 berthing area reserved for pushing-navigation vessels that are required to carry three blue cones
- OTH other restrictions (only for small motor crafts, only for border control, only for damaged vessels after an accident, max. time allowed for berthing,...))

river bank construction

- sheet pile wall
- embankment (slope)
- quay walls
- dam
- dolphins
- pontoon
- natural (wild)

specimen widths

- 1 beam
- 2 beams
- 3 beams
- 150

connections

ports/harbours in the surrounding area

- < 5 km Constanta Port

villages, cities in the surrounding area

- < 10 km Constanta
- < 5 km Agigea

access road

- yes no

facilities

stairs to go ashore

yes no

possibility to load and unload cars from a vessel

yes no

lighting

yes no

maintenance and disposal facilities

electricity supply

yes no

fresh water supply

yes no

waste disposal

yes no

petrol station

yes no

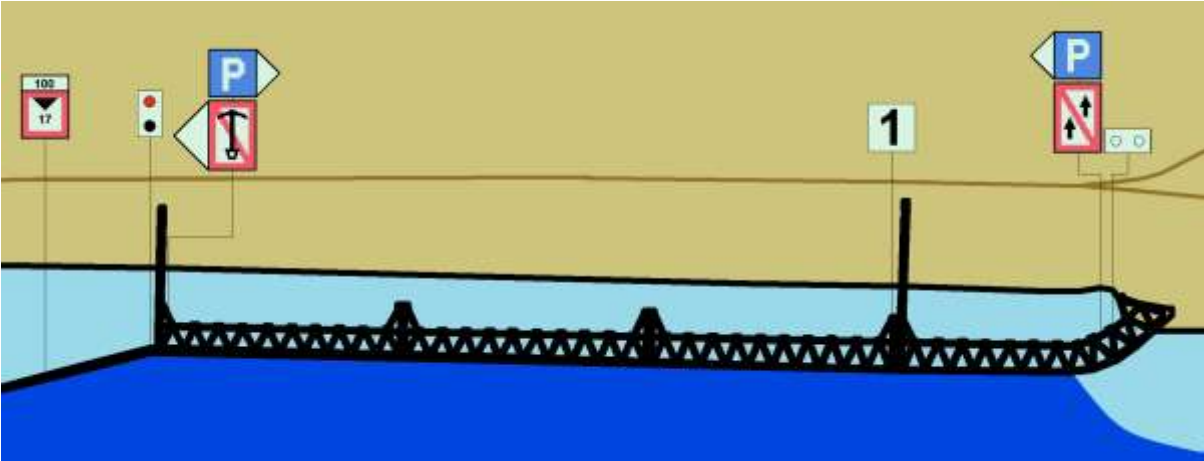
safety in case of flood or storm

yes no

Parking fees/costs

yes no

Mooring place for entrance in to the Agigea Lock



Mooring place for entrance in to the Agigea Lock

Danube km: 0+890 - 1+290

GPS coordinates:

North: 44° 5' 58"

East: 28° 37' 39.7"

berths information

length: 400 m

river bank

- L left river bank
- R right river bank
- T at the dam

location

- DPP "downstream" side of a power plant
- DL "downstream" side of o lock (lock entrance area)
- UL "upstream" side of a lock (lock entrance area)
- UPP "upstream" side of a power plant
- ARS along the river stretch
- OTH others (before a harbour entrance in an old river branch)

local berths conditions

- 0 berthing permitted (i.e. anchoring or making fast to the bank)
- 1 berthing area reserved for pushing-navigation vessels that are required to carry one blue cone
- 2 berthing area reserved for pushing-navigation vessels that are required to carry two blue cones
- 3 berthing area reserved for pushing-navigation vessels that are required to carry three blue cones
- OTH other restrictions (only for small motor crafts, only for border control, only for damaged vessels after an accident, max. time allowed for berthing,...))

facilities

stairs to go ashore

- yes no

possibility to load and unload cars from a vessel

- yes no

lighting

- yes no

river bank construction

- sheet pile wall
- embankment (slope)
- quay walls
- dam
- dolphins
- pontoon
- natural (wild)

specimen widths

- 1 beam
- 2 beams
- 3 beams
- 150

connections

ports/harbours in the surrounding area

- < 5 km Constanta Port

villages, cities in the surrounding area

- < 5 km Agigea
 < 10 km Constantza

access road

- yes no

maintenance and disposal facilities

electricity supply

- yes no

fresh water supply

- yes no

waste disposal

- yes no

petrol station

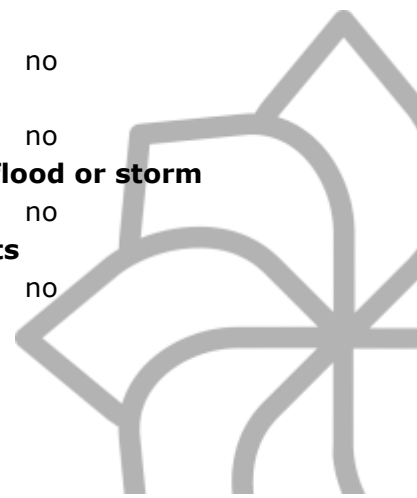
- yes no

safety in case of flood or storm

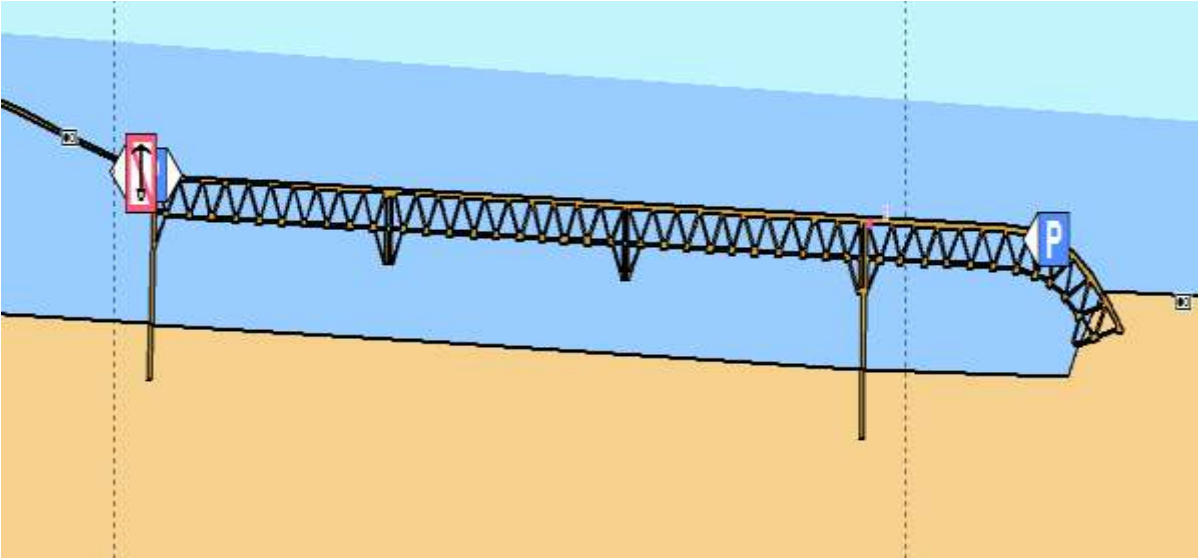
- yes no

Parking fees/costs

- yes no



Mooring place for entrance in to the Agigea Lock



Mooring place for entrance in to the Agigea Locknew berth

Danube km: 2+132 - 2+932

GPS coordinates:

North: 44° 6' 4.88"

East: 28° 36' 36.03"

berths information

length: 800 m

river bank

- L left river bank
 R right river bank
 T at the dam

location

- DPP "downstream" side of a power plant
 DL "downstream" side of o lock (lock entrance area)
 UL "upstream" side of a lock (lock entrance area)
 UPP "upstream" side of a power plant
 ARS along the river stretch
 OTH others (before a harbour entrance in an old river branch)

local berths conditions

- 0 berthing permitted (i.e. anchoring or making fast to the bank)
 1 berthing area reserved for pushing-navigation vessels that are required to carry one blue cone
 2 berthing area reserved for pushing-navigation vessels that are required to carry two blue cones
 3 berthing area reserved for pushing-navigation vessels that are required to carry three blue cones
 OTH other restrictions (only for small motor crafts, only for border control, only for damaged vessels after an accident, max. time allowed for berthing,...))

facilities

stairs to go ashore

- yes no

possibility to load and unload cars from a vessel

- yes no

lighting

- yes no

river bank construction

- sheet pile wall
 embankment (slope)
 quay walls
 dam
 dolphins
 pontoon
 natural (wild)

specimen widths

- 1 beam
 2 beams
 3 beams
 150

connections

ports/harbours in the surrounding area

- < 5 km Constanta

villages, cities in the surrounding area

- < 5 km Agigea
 < 10 km Constanta

access road

- yes no

maintenance and disposal facilities

electricity supply

- yes no

fresh water supply

- yes no

waste disposal

- yes no

petrol station

- yes no

safety in case of flood or storm

- yes no

Parking fees/costs

- yes no

Mooring place for entrance in to the Agigea Locknew berth



Mooring place for entrance in to the Agigea Lock

Danube km: 2+132 - 2+932

GPS coordinates:

North: 44° 5' 59.67"

East: 28° 36' 47.51"

berths information

length: 800 m

river bank

- L left river bank
 R right river bank
 T at the dam

location

- DPP "downstream" side of a power plant
 DL "downstream" side of o lock (lock entrance area)
 UL "upstream" side of a lock (lock entrance area)
 UPP "upstream" side of a power plant
 ARS along the river stretch
 OTH others (before a harbour entrance in an old river branch)

local berths conditions

- 0 berthing permitted (i.e. anchoring or making fast to the bank)
 1 berthing area reserved for pushing-navigation vessels that are required to carry one blue cone
 2 berthing area reserved for pushing-navigation vessels that are required to carry two blue cones
 3 berthing area reserved for pushing-navigation vessels that are required to carry three blue cones
 OTH other restrictions (only for small motor crafts, only for border control, only for damaged vessels after an accident, max. time allowed for berthing,...))

facilities

stairs to go ashore

- yes no

possibility to load and unload cars from a vessel

- yes no

lighting

- yes no

river bank construction

- sheet pile wall
 embankment (slope)
 quay walls
 dam
 dolphins
 pontoon
 natural (wild)

specimen widths

- 1 beam
 2 beams
 3 beams
 150

connections

ports/harbours in the surrounding area

- < 5 km Constanta Port

villages, cities in the surrounding area

- < 5 km Agigea
 < 10 km Constanta

access road

- yes no

maintenance and disposal facilities

electricity supply

- yes no

fresh water supply

- yes no

waste disposal

- yes no

petrol station

- yes no

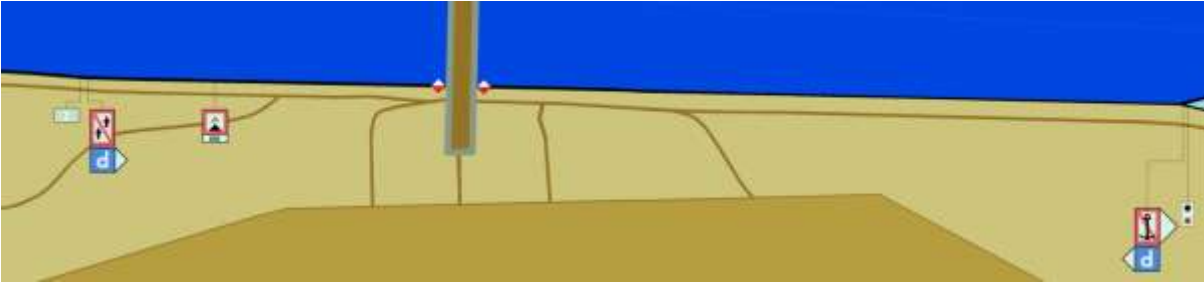
safety in case of flood or storm

- yes no

Parking fees/costs

- yes no

Mooring place for entrance in to the Agigea Lock



Mooring place for entrance in to the Murfatlar port

Danube km: 25+085 - 25+460

GPS coordinates:

North: 44° 11' 6.09"

East: 28° 23' 39.02"

berths information

length: 375 m

river bank

- L left river bank
 R right river bank
 T at the dam

location

- DPP "downstream" side of a power plant
 DL "downstream" side of o lock (lock entrance area)
 UL "upstream" side of a lock (lock entrance area)
 UPP "upstream" side of a power plant
 ARS along the river stretch
 OTH others (before a harbour entrance in an old river branch)

local berths conditions

- 0 berthing permitted (i.e. anchoring or making fast to the bank)
 1 berthing area reserved for pushing-navigation vessels that are required to carry one blue cone
 2 berthing area reserved for pushing-navigation vessels that are required to carry two blue cones
 3 berthing area reserved for pushing-navigation vessels that are required to carry three blue cones
 OTH other restrictions (only for small motor crafts, only for border control, only for damaged vessels after an accident, max. time allowed for berthing,...))

facilities

stairs to go ashore

- yes no

possibility to load and unload cars from a vessel

- yes no

lighting

- yes no

river bank construction

- sheet pile wall
 embankment (slope)
 quay walls
 dam
 dolphins
 pontoon
 natural (wild)

specimen widths

- 1 beam
 2 beams
 3 beams
 150

connections

ports/harbours in the surrounding area

- < 5 km Murfatlar

villages, cities in the surrounding area

- < 5 km Murfatlar

access road

- yes no

maintenance and disposal facilities

electricity supply

- yes no

fresh water supply

- yes no

waste disposal

- yes no

petrol station

- yes no

safety in case of flood or storm

- yes no

Parking fees/costs

- yes no

Mooring place for entrance in to the Murfatlar port



Mooring place for entrance in to the Medgidia port

Danube km: 36+910 - 37+310

GPS coordinates:

North: 44° 14' 54.57"

East: 28° 18' 21.86"

berths information

length: 400 m

river bank

- L left river bank
 R right river bank
 T at the dam

location

- DPP "downstream" side of a power plant
 DL "downstream" side of o lock (lock entrance area)
 UL "upstream" side of a lock (lock entrance area)
 UPP "upstream" side of a power plant
 ARS along the river stretch
 OTH others (before a harbour entrance in an old river branch)

local berths conditions

- 0 berthing permitted (i.e. anchoring or making fast to the bank)
 1 berthing area reserved for pushing-navigation vessels that are required to carry one blue cone
 2 berthing area reserved for pushing-navigation vessels that are required to carry two blue cones
 3 berthing area reserved for pushing-navigation vessels that are required to carry three blue cones
 OTH other restrictions (only for small motor crafts, only for border control, only for damaged vessels after an accident, max. time allowed for berthing,...))

facilities

stairs to go ashore

- yes no

possibility to load and unload cars from a vessel

- yes no

lighting

- yes no

river bank construction

- sheet pile wall
 embankment (slope)
 quay walls
 dam
 dolphins
 pontoon
 natural (wild)

specimen widths

- 1 beam
 2 beams
 3 beams
 120

connections

ports/harbours in the surrounding area

- < 5 km Medgidia

villages, cities in the surrounding area

- < 5 km Medgidia

access road

- yes no

maintenance and disposal facilities

electricity supply

- yes no

fresh water supply

- yes no

waste disposal

- yes no

petrol station

- yes no

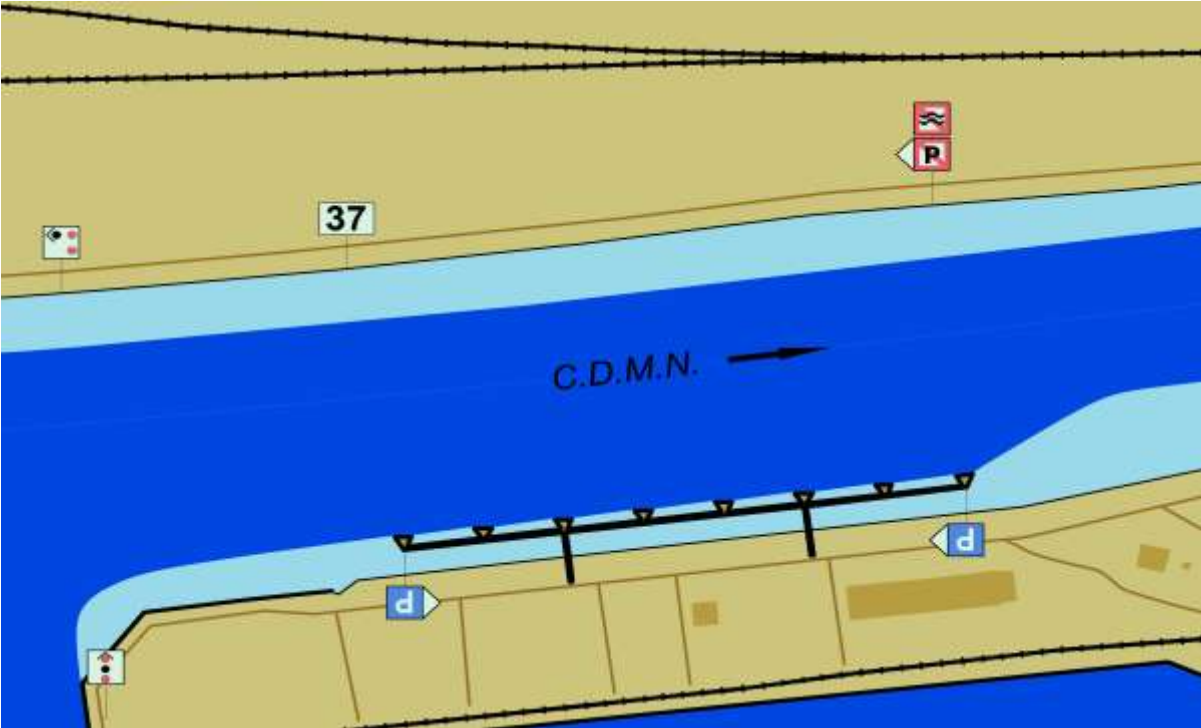
safety in case of flood or storm

- yes no

Parking fees/costs

- yes no

Mooring place for entrance in to the Medgidia port



Mooring place for entrance in to the Medgidia port

Danube km: 37+785 - 38+435

GPS coordinates:

North: 44° 14' 54.57"

East: 28° 17' 24.45"

berths information

length: 650 m

river bank

- L left river bank
- R right river bank
- T at the dam

location

- DPP "downstream" side of a power plant
- DL "downstream" side of o lock (lock entrance area)
- UL "upstream" side of a lock (lock entrance area)
- UPP "upstream" side of a power plant
- ARS along the river stretch
- OTH others (before a harbour entrance in an old river branch)

local berths conditions

- 0 berthing permitted (i.e. anchoring or making fast to the bank)
- 1 berthing area reserved for pushing-navigation vessels that are required to carry one blue cone
- 2 berthing area reserved for pushing-navigation vessels that are required to carry two blue cones
- 3 berthing area reserved for pushing-navigation vessels that are required to carry three blue cones
- OTH other restrictions (only for small motor crafts, only for border control, only for damaged vessels after an accident, max. time allowed for berthing,...))

facilities

stairs to go ashore

- yes no

possibility to load and unload cars from a vessel

- yes no

lighting

- yes no

river bank construction

- sheet pile wall
- embankment (slope)
- quay walls
- dam
- dolphins
- pontoon
- natural (wild)

specimen widths

- 1 beam
- 2 beams
- 3 beams
- 120

connections

ports/harbours in the surrounding area

- < 5 km Medgidia

villages, cities in the surrounding area

- < 5 km Medgidia

access road

- yes no

maintenance and disposal facilities

electricity supply

- yes no

fresh water supply

- yes no

waste disposal

- yes no

petrol station

- yes no

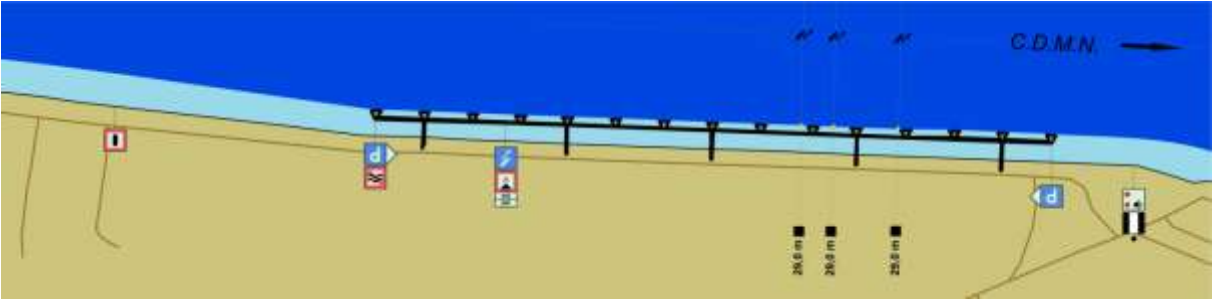
safety in case of flood or storm

- yes no

Parking fees/costs

- yes no

Mooring place for entrance in to the Medgidia port



Mooring place for entrance in to the Cernavoda Lock

Danube km: 58+883 - 59+683

GPS coordinates:

North: 44° 18' 28.64"

East: 28° 3' 1.44"

berths information

length: 800 m

river bank

- L left river bank
- R right river bank
- T at the dam

location

- DPP "downstream" side of a power plant
- DL "downstream" side of o lock (lock entrance area)
- UL "upstream" side of a lock (lock entrance area)
- UPP "upstream" side of a power plant
- ARS along the river stretch
- OTH others (before a harbour entrance in an old river branch)

local berths conditions

- 0 berthing permitted (i.e. anchoring or making fast to the bank)
- 1 berthing area reserved for pushing-navigation vessels that are required to carry one blue cone
- 2 berthing area reserved for pushing-navigation vessels that are required to carry two blue cones
- 3 berthing area reserved for pushing-navigation vessels that are required to carry three blue cones
- OTH other restrictions (only for small motor crafts, only for border control, only for damaged vessels after an accident, max. time allowed for berthing,...))

facilities

stairs to go ashore

- yes no

possibility to load and unload cars from a vessel

- yes no

lighting

- yes no

river bank construction

- sheet pile wall
- embankment (slope)
- quay walls
- dam
- dolphins
- pontoon
- natural (wild)

specimen widths

- 1 beam
- 2 beams
- 3 beams
- 150

connections

ports/harbours in the surrounding area

- < 5 km Cernavoda

villages, cities in the surrounding area

- < 5 km Cernavoda

access road

- yes no

maintenance and disposal facilities

electricity supply

- yes no

fresh water supply

- yes no

waste disposal

- yes no

petrol station

- yes no

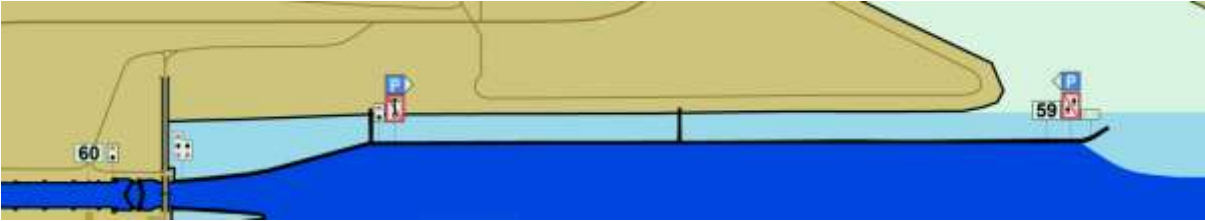
safety in case of flood or storm

- yes no

Parking fees/costs

- yes no

Mooring place for entrance in to the Cernavoda Lock



Mooring place for entrance in to the Cernavoda Lock

Danube km: 59+283 - 59+683

GPS coordinates:

North: 44° 18' 30.87"

East: 28° 2' 51.91"

berths information

length: 400 m

river bank

- L left river bank
 R right river bank
 T at the dam

location

- DPP "downstream" side of a power plant
 DL "downstream" side of o lock (lock entrance area)
 UL "upstream" side of a lock (lock entrance area)
 UPP "upstream" side of a power plant
 ARS along the river stretch
 OTH others (before a harbour entrance in an old river branch)

local berths conditions

- 0 berthing permitted (i.e. anchoring or making fast to the bank)
 1 berthing area reserved for pushing-navigation vessels that are required to carry one blue cone
 2 berthing area reserved for pushing-navigation vessels that are required to carry two blue cones
 3 berthing area reserved for pushing-navigation vessels that are required to carry three blue cones
 OTH other restrictions (only for small motor crafts, only for border control, only for damaged vessels after an accident, max. time allowed for berthing,...))

facilities

stairs to go ashore

- yes no

possibility to load and unload cars from a vessel

- yes no

lighting

- yes no

river bank construction

- sheet pile wall
 embankment (slope)
 quay walls
 dam
 dolphins
 pontoon
 natural (wild)

specimen widths

- 1 beam
 2 beams
 3 beams
 150

connections

ports/harbours in the surrounding area

- < 5 km Cernavoda

villages, cities in the surrounding area

- < 5 km Cernavoda

access road

- yes no

maintenance and disposal facilities

electricity supply

- yes no

fresh water supply

- yes no

waste disposal

- yes no

petrol station

- yes no

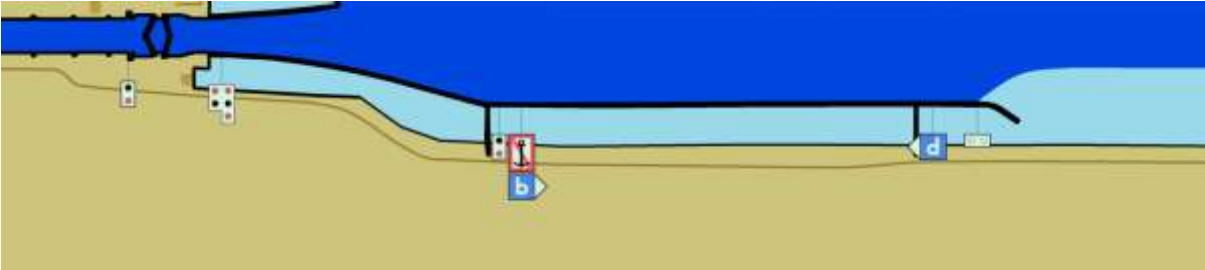
safety in case of flood or storm

- yes no

Parking fees/costs

- yes no

Mooring place for entrance in to the Cernavoda Lock



Mooring place for entrance in to the Cernavoda Lock

Danube km: 60+525 - 61+225

GPS coordinates:

North: 44° 19' 9.04"

East: 28° 2' 30.56"

berths information

length: 700 m

river bank

- L left river bank
 R right river bank
 T at the dam

location

- DPP "downstream" side of a power plant
 DL "downstream" side of o lock (lock entrance area)
 UL "upstream" side of a lock (lock entrance area)
 UPP "upstream" side of a power plant
 ARS along the river stretch
 OTH others (before a harbour entrance in an old river branch)

local berths conditions

- 0 berthing permitted (i.e. anchoring or making fast to the bank)
 1 berthing area reserved for pushing-navigation vessels that are required to carry one blue cone
 2 berthing area reserved for pushing-navigation vessels that are required to carry two blue cones
 3 berthing area reserved for pushing-navigation vessels that are required to carry three blue cones
 OTH other restrictions (only for small motor crafts, only for border control, only for damaged vessels after an accident, max. time allowed for berthing,...))

facilities

stairs to go ashore

- yes no

possibility to load and unload cars from a vessel

- yes no

lighting

- yes no

river bank construction

- sheet pile wall
 embankment (slope)
 quay walls
 dam
 dolphins
 pontoon
 natural (wild)

specimen widths

- 1 beam
 2 beams
 3 beams
 150

connections

ports/harbours in the surrounding area

- < 5 km Cernavoda

villages, cities in the surrounding area

- < 5 km Cernavoda

access road

- yes no

maintenance and disposal facilities

electricity supply

- yes no

fresh water supply

- yes no

waste disposal

- yes no

petrol station

- yes no

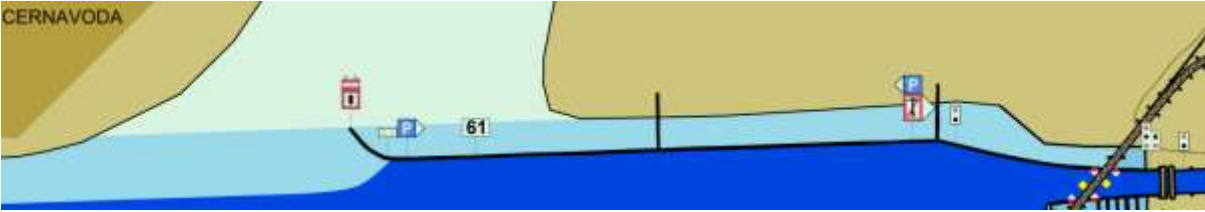
safety in case of flood or storm

- yes no

Parking fees/costs

- yes no

Mooring place for entrance in to the Cernavoda Lock



Mooring place for entrance in to the Cernavoda Lock

Danube km: 60+525 - 61+325

GPS coordinates:

North: 44° 19' 11.54"

East: 28° 2' 20.85"

berths information

length: 800 m

river bank

- L left river bank
 R right river bank
 T at the dam

location

- DPP "downstream" side of a power plant
 DL "downstream" side of o lock (lock entrance area)
 UL "upstream" side of a lock (lock entrance area)
 UPP "upstream" side of a power plant
 ARS along the river stretch
 OTH others (before a harbour entrance in an old river branch)

local berths conditions

- 0 berthing permitted (i.e. anchoring or making fast to the bank)
 1 berthing area reserved for pushing-navigation vessels that are required to carry one blue cone
 2 berthing area reserved for pushing-navigation vessels that are required to carry two blue cones
 3 berthing area reserved for pushing-navigation vessels that are required to carry three blue cones
 OTH other restrictions (only for small motor crafts, only for border control, only for damaged vessels after an accident, max. time allowed for berthing,...))

facilities

stairs to go ashore

- yes no

possibility to load and unload cars from a vessel

- yes no

lighting

- yes no

river bank construction

- sheet pile wall
 embankment (slope)
 quay walls
 dam
 dolphins
 pontoon
 natural (wild)

specimen widths

- 1 beam
 2 beams
 3 beams
 150

connections

ports/harbours in the surrounding area

- < 5 km Cernavoda

villages, cities in the surrounding area

- < 5 km Cernavoda

access road

- yes no

maintenance and disposal facilities

electricity supply

- yes no

fresh water supply

- yes no

waste disposal

- yes no

petrol station

- yes no

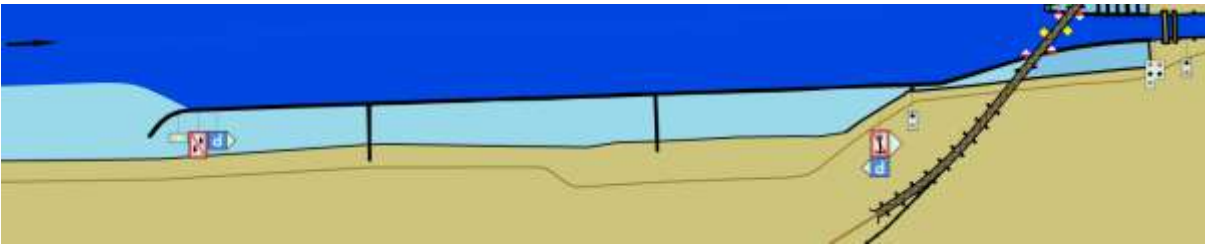
safety in case of flood or storm

- yes no

Parking fees/costs

- yes no

Mooring place for entrance in to the Cernavoda Lock



Mooring place for entrance in to the Navodari Lock

Danube km: 1+705 - 1+850

GPS coordinates:

North: 44° 19' 27.65"

East: 28° 37' 37.87"

berths information

length: 145 m

river bank

- L left river bank
 R right river bank
 T at the dam

location

- DPP "downstream" side of a power plant
 DL "downstream" side of o lock (lock entrance area)
 UL "upstream" side of a lock (lock entrance area)
 UPP "upstream" side of a power plant
 ARS along the river stretch
 OTH others (before a harbour entrance in an old river branch)

local berths conditions

- 0 berthing permitted (i.e. anchoring or making fast to the bank)
 1 berthing area reserved for pushing-navigation vessels that are required to carry one blue cone
 2 berthing area reserved for pushing-navigation vessels that are required to carry two blue cones
 3 berthing area reserved for pushing-navigation vessels that are required to carry three blue cones
 OTH other restrictions (only for small motor crafts, only for border control, only for damaged vessels after an accident, max. time allowed for berthing,...))

facilities

stairs to go ashore

- yes no

possibility to load and unload cars from a vessel

- yes no

lighting

- yes no

river bank construction

- sheet pile wall
 embankment (slope)
 quay walls
 dam
 dolphins
 pontoon
 natural (wild)

specimen widths

- 1 beam
 2 beams
 3 beams
 90-150

connections

ports/harbours in the surrounding area

- < 5 km MIDIA Port

villages, cities in the surrounding area

- < 5 km Navodari

access road

- yes no

maintenance and disposal facilities

electricity supply

- yes no

fresh water supply

- yes no

waste disposal

- yes no

petrol station

- yes no

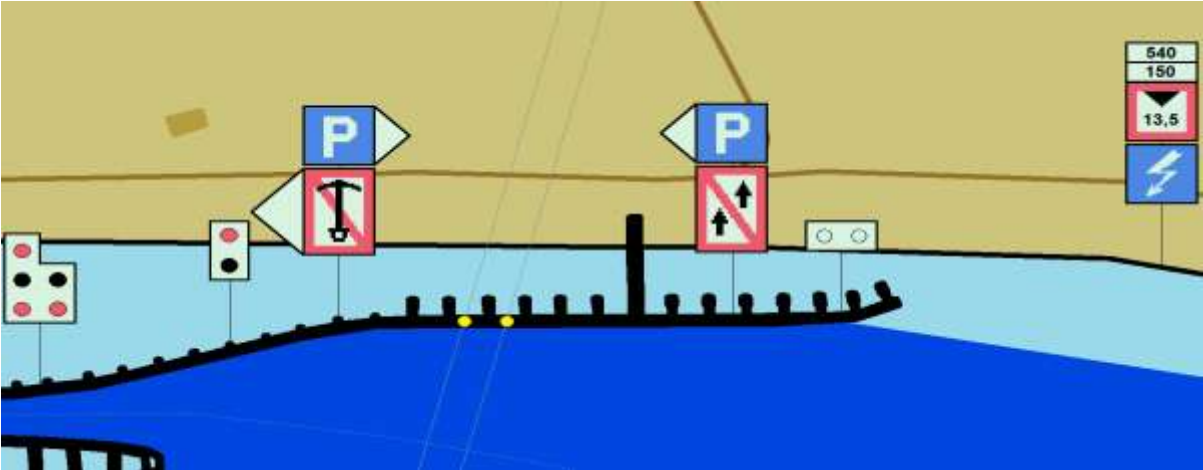
safety in case of flood or storm

- yes no

Parking fees/costs

- yes no

Mooring place for entrance in to the Navodari Lock



Mooring place for entrance in to the Navodari Lock

Danube km: 1+705 - 1+850

GPS coordinates:

North: 44° 19' 24.74"

East: 28° 37' 40.5"

berths information

length: 145 m

river bank

- L left river bank
- R right river bank
- T at the dam

location

- DPP "downstream" side of a power plant
- DL "downstream" side of o lock (lock entrance area)
- UL "upstream" side of a lock (lock entrance area)
- UPP "upstream" side of a power plant
- ARS along the river stretch
- OTH others (before a harbour entrance in an old river branch)

local berths conditions

- 0 berthing permitted (i.e. anchoring or making fast to the bank)
- 1 berthing area reserved for pushing-navigation vessels that are required to carry one blue cone
- 2 berthing area reserved for pushing-navigation vessels that are required to carry two blue cones
- 3 berthing area reserved for pushing-navigation vessels that are required to carry three blue cones
- OTH other restrictions (only for small motor crafts, only for border control, only for damaged vessels after an accident, max. time allowed for berthing,...))

facilities

stairs to go ashore

- yes no

possibility to load and unload cars from a vessel

- yes no

lighting

- yes no

river bank construction

- sheet pile wall
- embankment (slope)
- quay walls
- dam
- dolphins
- pontoon
- natural (wild)

specimen widths

- 1 beam
- 2 beams
- 3 beams
- 90 - 150

connections

ports/harbours in the surrounding area

- < 5 km MIDIA Port

villages, cities in the surrounding area

- < 5 km Navodari

access road

- yes no

maintenance and disposal facilities

electricity supply

- yes no

fresh water supply

- yes no

waste disposal

- yes no

petrol station

- yes no

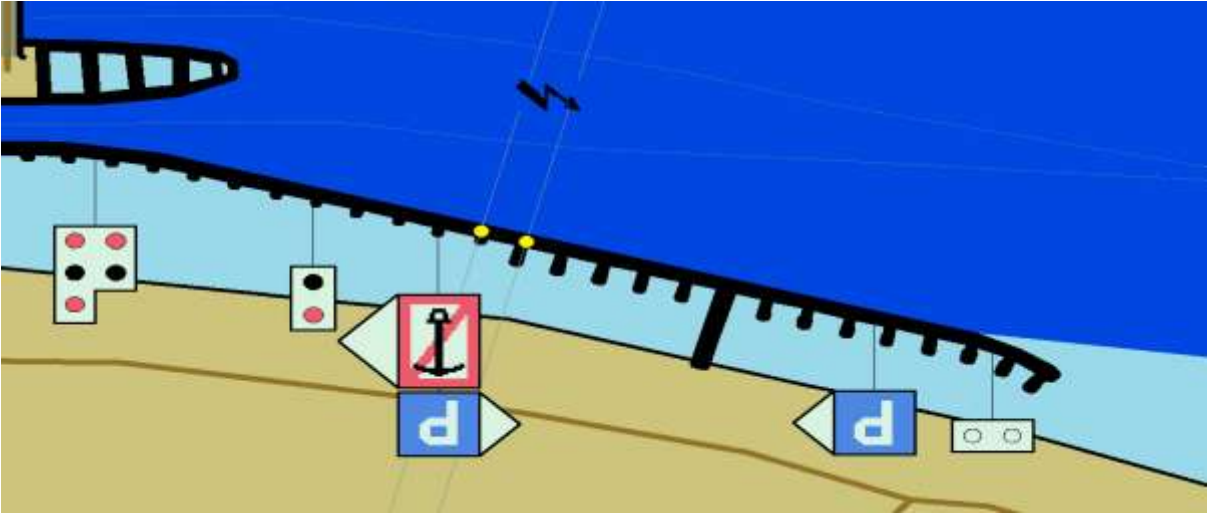
safety in case of flood or storm

- yes no

Parking fees/costs

- yes no

Mooring place for entrance in to the Navodari Lock



Mooring place for entrance in to the Navodari Lock

Danube km: 2+400 - 2+690

GPS coordinates:

North: 44° 19' 10.43"

East: 28° 37' 23.04"

berths information

length: 290 m

river bank

- L left river bank
- R right river bank
- T at the dam

location

- DPP "downstream" side of a power plant
- DL "downstream" side of o lock (lock entrance area)
- UL "upstream" side of a lock (lock entrance area)
- UPP "upstream" side of a power plant
- ARS along the river stretch
- OTH others (before a harbour entrance in an old river branch)

local berths conditions

- 0 berthing permitted (i.e. anchoring or making fast to the bank)
- 1 berthing area reserved for pushing-navigation vessels that are required to carry one blue cone
- 2 berthing area reserved for pushing-navigation vessels that are required to carry two blue cones
- 3 berthing area reserved for pushing-navigation vessels that are required to carry three blue cones
- OTH other restrictions (only for small motor crafts, only for border control, only for damaged vessels after an accident, max. time allowed for berthing,...))

facilities

stairs to go ashore

- yes no

possibility to load and unload cars from a vessel

- yes no

lighting

- yes no

river bank construction

- sheet pile wall
- embankment (slope)
- quay walls
- dam
- dolphins
- pontoon
- natural (wild)

specimen widths

- 1 beam
- 2 beams
- 3 beams
- 90-150

connections

ports/harbours in the surrounding area

- < 5 km MIDIA Port

villages, cities in the surrounding area

- < 5 km Navodari

access road

- yes no

maintenance and disposal facilities

electricity supply

- yes no

fresh water supply

- yes no

waste disposal

- yes no

petrol station

- yes no

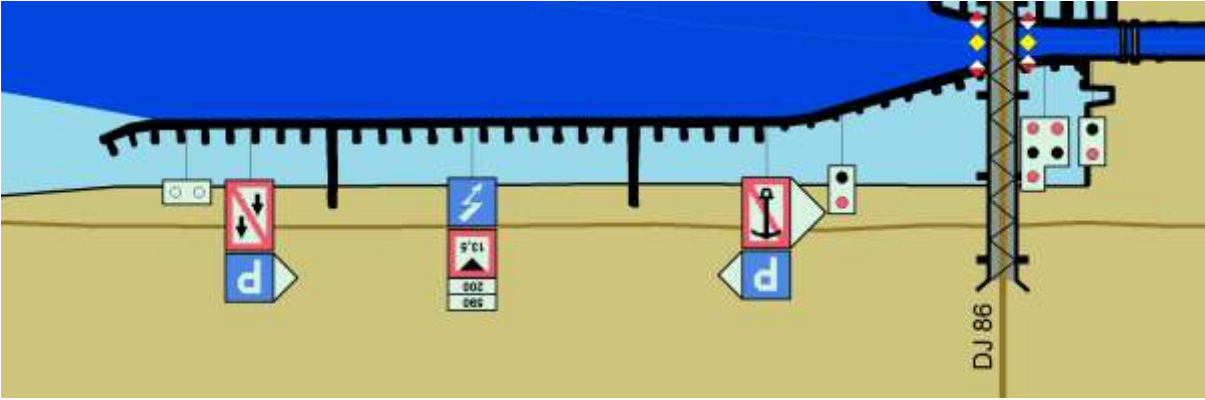
safety in case of flood or storm

- yes no

Parking fees/costs

- yes no

Mooring place for entrance in to the Navodari Lock



Mooring place for entrance in to the Ovidiu Lock

Danube km: 11+750 - 12+040

GPS coordinates:

North: 44° 16' 13.66"

East: 28° 32' 57.8"

berths information

length: 290 m

river bank

- L left river bank
 R right river bank
 T at the dam

location

- DPP "downstream" side of a power plant
 DL "downstream" side of o lock (lock entrance area)
 UL "upstream" side of a lock (lock entrance area)
 UPP "upstream" side of a power plant
 ARS along the river stretch
 OTH others (before a harbour entrance in an old river branch)

local berths conditions

- 0 berthing permitted (i.e. anchoring or making fast to the bank)
 1 berthing area reserved for pushing-navigation vessels that are required to carry one blue cone
 2 berthing area reserved for pushing-navigation vessels that are required to carry two blue cones
 3 berthing area reserved for pushing-navigation vessels that are required to carry three blue cones
 OTH other restrictions (only for small motor crafts, only for border control, only for damaged vessels after an accident, max. time allowed for berthing,...))

facilities

stairs to go ashore

- yes no

possibility to load and unload cars from a vessel

- yes no

lighting

- yes no

river bank construction

- sheet pile wall
 embankment (slope)
 quay walls
 dam
 dolphins
 pontoon
 natural (wild)

specimen widths

- 1 beam
 2 beams
 3 beams
 90

connections

ports/harbours in the surrounding area

- < 5 km Ovidiu Port

villages, cities in the surrounding area

- < 5 km Ovidiu

access road

- yes no

maintenance and disposal facilities

electricity supply

- yes no

fresh water supply

- yes no

waste disposal

- yes no

petrol station

- yes no

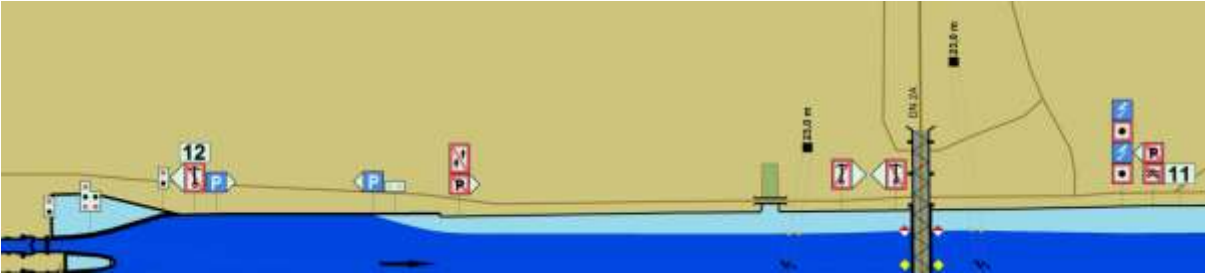
safety in case of flood or storm

- yes no

Parking fees/costs

- yes no

Mooring place for entrance in to the Ovidiu Lock



Mooring place for entrance in to the Ovidiu Lock

Danube km: 11+800 - 12+040

GPS coordinates:

North: 44° 16' 10.62"

East: 28° 32' 53.79"

berths information

length: 240 m

river bank

- L left river bank
- R right river bank
- T at the dam

location

- DPP "downstream" side of a power plant
- DL "downstream" side of o lock (lock entrance area)
- UL "upstream" side of a lock (lock entrance area)
- UPP "upstream" side of a power plant
- ARS along the river stretch
- OTH others (before a harbour entrance in an old river branch)

local berths conditions

- 0 berthing permitted (i.e. anchoring or making fast to the bank)
- 1 berthing area reserved for pushing-navigation vessels that are required to carry one blue cone
- 2 berthing area reserved for pushing-navigation vessels that are required to carry two blue cones
- 3 berthing area reserved for pushing-navigation vessels that are required to carry three blue cones
- OTH other restrictions (only for small motor crafts, only for border control, only for damaged vessels after an accident, max. time allowed for berthing,...))

facilities

stairs to go ashore

- yes no

possibility to load and unload cars from a vessel

- yes no

lighting

- yes no

river bank construction

- sheet pile wall
- embankment (slope)
- quay walls
- dam
- dolphins
- pontoon
- natural (wild)

specimen widths

- 1 beam
- 2 beams
- 3 beams
- 90

connections

ports/harbours in the surrounding area

- < 5 km Ovidiu Port

villages, cities in the surrounding area

- < 5 km Ovidiu

access road

- yes no

maintenance and disposal facilities

electricity supply

- yes no

fresh water supply

- yes no

waste disposal

- yes no

petrol station

- yes no

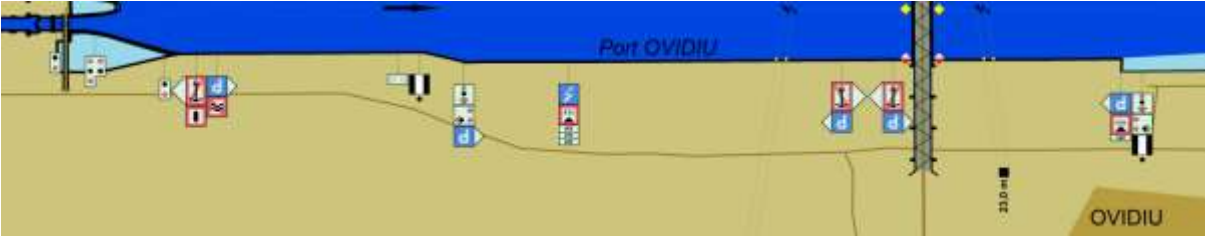
safety in case of flood or storm

- yes no

Parking fees/costs

- yes no

Mooring place for entrance in to the Ovidiu Lock



Mooring place for entrance in to the Ovidiu Lock

Danube km: 12+430 - 12+720

GPS coordinates:

North: 44° 16' 20.89"

East: 28° 32' 28.69"

berths information

length: 290 m

river bank

- L left river bank
- R right river bank
- T at the dam

location

- DPP "downstream" side of a power plant
- DL "downstream" side of o lock (lock entrance area)
- UL "upstream" side of a lock (lock entrance area)
- UPP "upstream" side of a power plant
- ARS along the river stretch
- OTH others (before a harbour entrance in an old river branch)

local berths conditions

- 0 berthing permitted (i.e. anchoring or making fast to the bank)
- 1 berthing area reserved for pushing-navigation vessels that are required to carry one blue cone
- 2 berthing area reserved for pushing-navigation vessels that are required to carry two blue cones
- 3 berthing area reserved for pushing-navigation vessels that are required to carry three blue cones
- OTH other restrictions (only for small motor crafts, only for border control, only for damaged vessels after an accident, max. time allowed for berthing,...))

facilities

stairs to go ashore

- yes no

possibility to load and unload cars from a vessel

- yes no

lighting

- yes no

river bank construction

- sheet pile wall
- embankment (slope)
- quay walls
- dam
- dolphins
- pontoon
- natural (wild)

specimen widths

- 1 beam
- 2 beams
- 3 beams
- 90

connections

ports/harbours in the surrounding area

- < 5 km Ovidiu Port

villages, cities in the surrounding area

- < 5 km Ovidiu

access road

- yes no

maintenance and disposal facilities

electricity supply

- yes no

fresh water supply

- yes no

waste disposal

- yes no

petrol station

- yes no

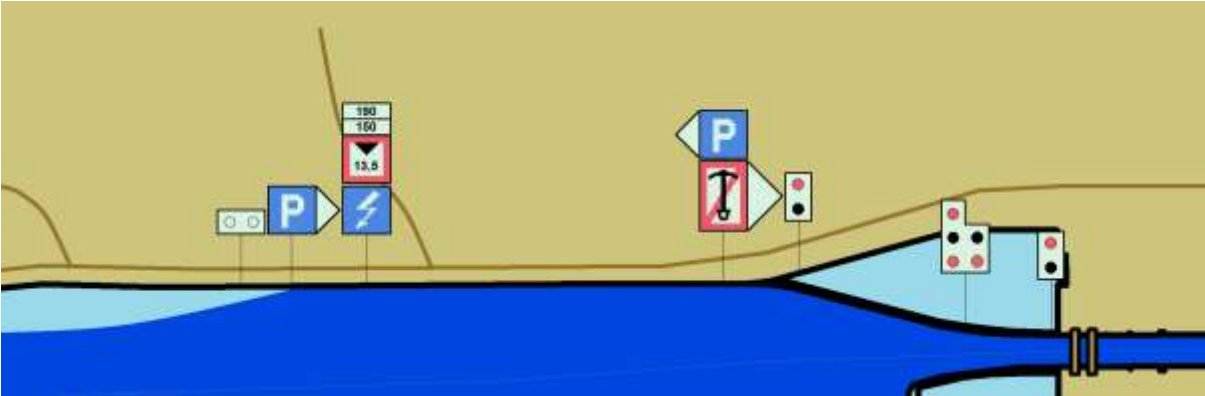
safety in case of flood or storm

- yes no

Parking fees/costs

- yes no

Mooring place for entrance in to the Ovidiu Lock



Mooring place for entrance in to the Ovidiu Lock

Danube km: 12+430 - 12+720

GPS coordinates:

North: 44° 16' 17.96"

East: 28° 32' 27.36"

berths information

length: 290 m

river bank

- L left river bank
- R right river bank
- T at the dam

location

- DPP "downstream" side of a power plant
- DL "downstream" side of o lock (lock entrance area)
- UL "upstream" side of a lock (lock entrance area)
- UPP "upstream" side of a power plant
- ARS along the river stretch
- OTH others (before a harbour entrance in an old river branch)

local berths conditions

- 0 berthing permitted (i.e. anchoring or making fast to the bank)
- 1 berthing area reserved for pushing-navigation vessels that are required to carry one blue cone
- 2 berthing area reserved for pushing-navigation vessels that are required to carry two blue cones
- 3 berthing area reserved for pushing-navigation vessels that are required to carry three blue cones
- OTH other restrictions (only for small motor crafts, only for border control, only for damaged vessels after an accident, max. time allowed for berthing,...))

facilities

stairs to go ashore

- yes no

possibility to load and unload cars from a vessel

- yes no

lighting

- yes no

river bank construction

- sheet pile wall
- embankment (slope)
- quay walls
- dam
- dolphins
- pontoon
- natural (wild)

specimen widths

- 1 beam
- 2 beams
- 3 beams
- 90

connections

ports/harbours in the surrounding area

- < 5 km Ovidiu Port

villages, cities in the surrounding area

- < 5 km Ovidiu

access road

- yes no

maintenance and disposal facilities

electricity supply

- yes no

fresh water supply

- yes no

waste disposal

- yes no

petrol station

- yes no

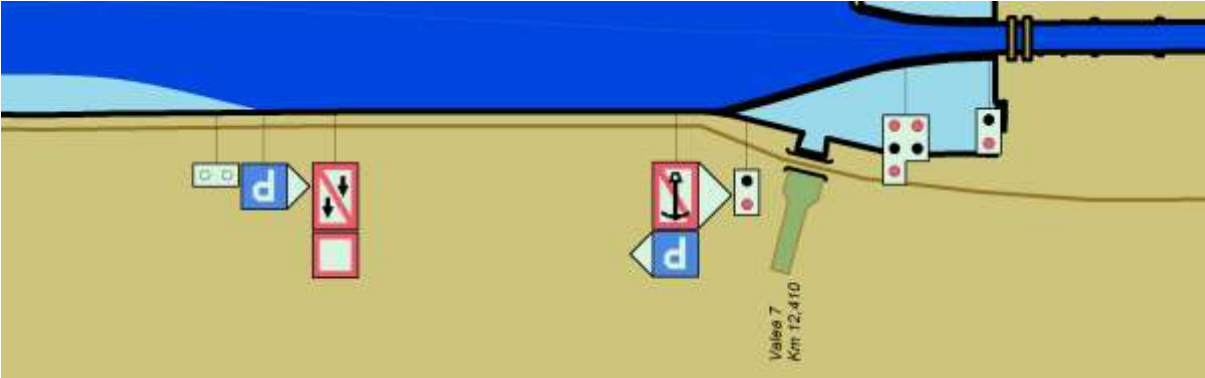
safety in case of flood or storm

- yes no

Parking fees/costs

- yes no

Mooring place for entrance in to the Ovidiu Lock



Mooring place for entrance in to the Poarta Alba Midia Navodari Canal

Danube km: 29+710 - 30+010

GPS coordinates:

North: 44° 13' 25.55"

East: 28° 22' 40.13"

berths information

length: 300 m

river bank

- L left river bank
- R right river bank
- T at the dam

location

- DPP "downstream" side of a power plant
- DL "downstream" side of o lock (lock entrance area)
- UL "upstream" side of a lock (lock entrance area)
- UPP "upstream" side of a power plant
- ARS along the river stretch
- OTH others (before a harbour entrance in an old river branch)

local berths conditions

- 0 berthing permitted (i.e. anchoring or making fast to the bank)
- 1 berthing area reserved for pushing-navigation vessels that are required to carry one blue cone
- 2 berthing area reserved for pushing-navigation vessels that are required to carry two blue cones
- 3 berthing area reserved for pushing-navigation vessels that are required to carry three blue cones
- OTH other restrictions (only for small motor crafts, only for border control, only for damaged vessels after an accident, max. time allowed for berthing,...))

facilities

stairs to go ashore

- yes no

possibility to load and unload cars from a vessel

- yes no

lighting

- yes no

river bank construction

- sheet pile wall
- embankment (slope)
- quay walls
- dam
- dolphins
- pontoon
- natural (wild)

specimen widths

- 1 beam
- 2 beams
- 3 beams
- 160

connections

ports/harbours in the surrounding area

- < 5 km Murfatlar

villages, cities in the surrounding area

- < 5 km Murfatlar
 < 5 km Poarta Alba

access road

- yes no

maintenance and disposal facilities

electricity supply

- yes no

fresh water supply

- yes no

waste disposal

- yes no

petrol station

- yes no

safety in case of flood or storm

- yes no

Parking fees/costs

- yes no

Mooring place for entrance in to the Poarta Alba Midia Navodari Canal

