

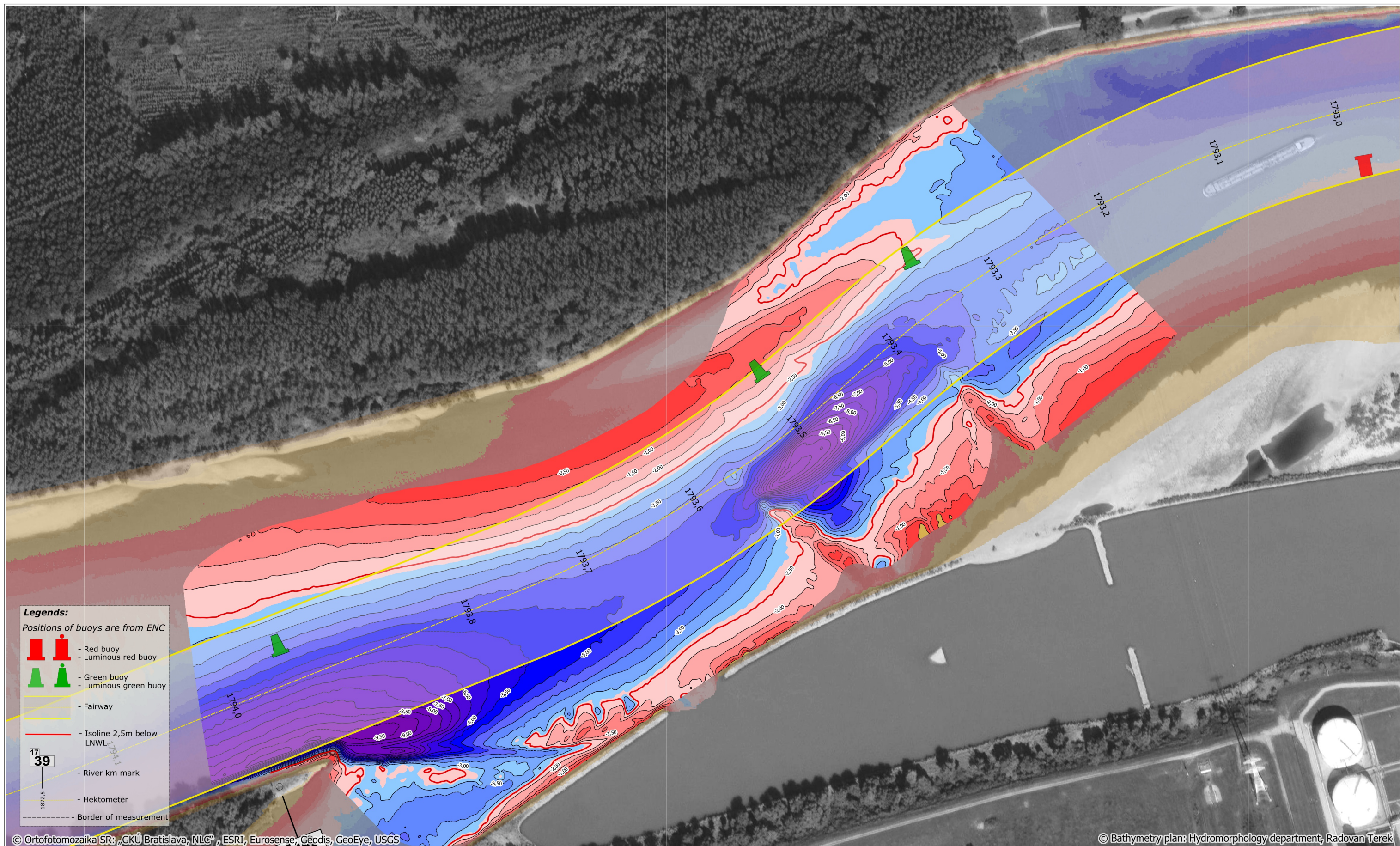
709000

709500

710000

5291500

5291500



Legends:
Positions of buoys are from ENC

- Red buoy
- Luminous red buoy
- Green buoy
- Luminous green buoy
- Fairway
- Isoline 2,5m below LNWL
- River km mark
- Hektometer
- Border of measurement

© Ortofotomozaika SR; „GKÚ Bratislava, NLC“, ESRI, Eurosense, Geodis, GeoEye, USGS

© Bathymetry plan: Hydromorphology department, Radovan Terek

709000

709500

710000

SLOVENSKÝ
VODOHOSPODÁRSKY
PODNIK, štátny podnik
Povodie Dunaja, odštepný závod

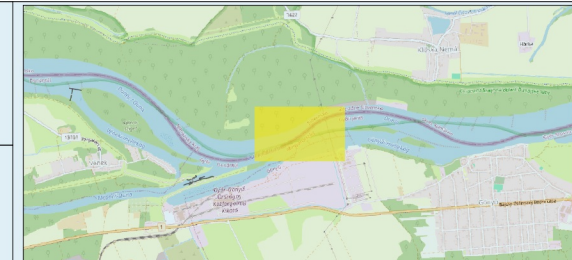
Martinská 49, 821 05 Bratislava
tel.č.: 02/60 292 494
email: Hydromorfologia_BA@svp.sk

Critical sections of the Danube River

Klížská Nemá 2

sheet: DIN-A3
rkm: 1793.9 - 1793.3
priority: 2
page: 10/23

date of measurement : 24.04.2024	gauge value : Gönyű 180 cm	elevation system/ reduced level: LNWL2022
date of processing : 26.04.2024	discharge : Medveďov Q=1953m ³	coordinate system: UTM 33N



100 0 100 200 m

1:3 000

MultiBeam

depth below:
LNWL2022
DEM

-50.0
-20.0
-9.0
-8.0
-7.5
-6.5
-6.0
-5.5
-5.0
-4.5
-4.0
-3.5
-3.0
-2.7
-2.0
-1.5
-1.0
-0.5
0.0
0.5
1.0
1.5
5.0