

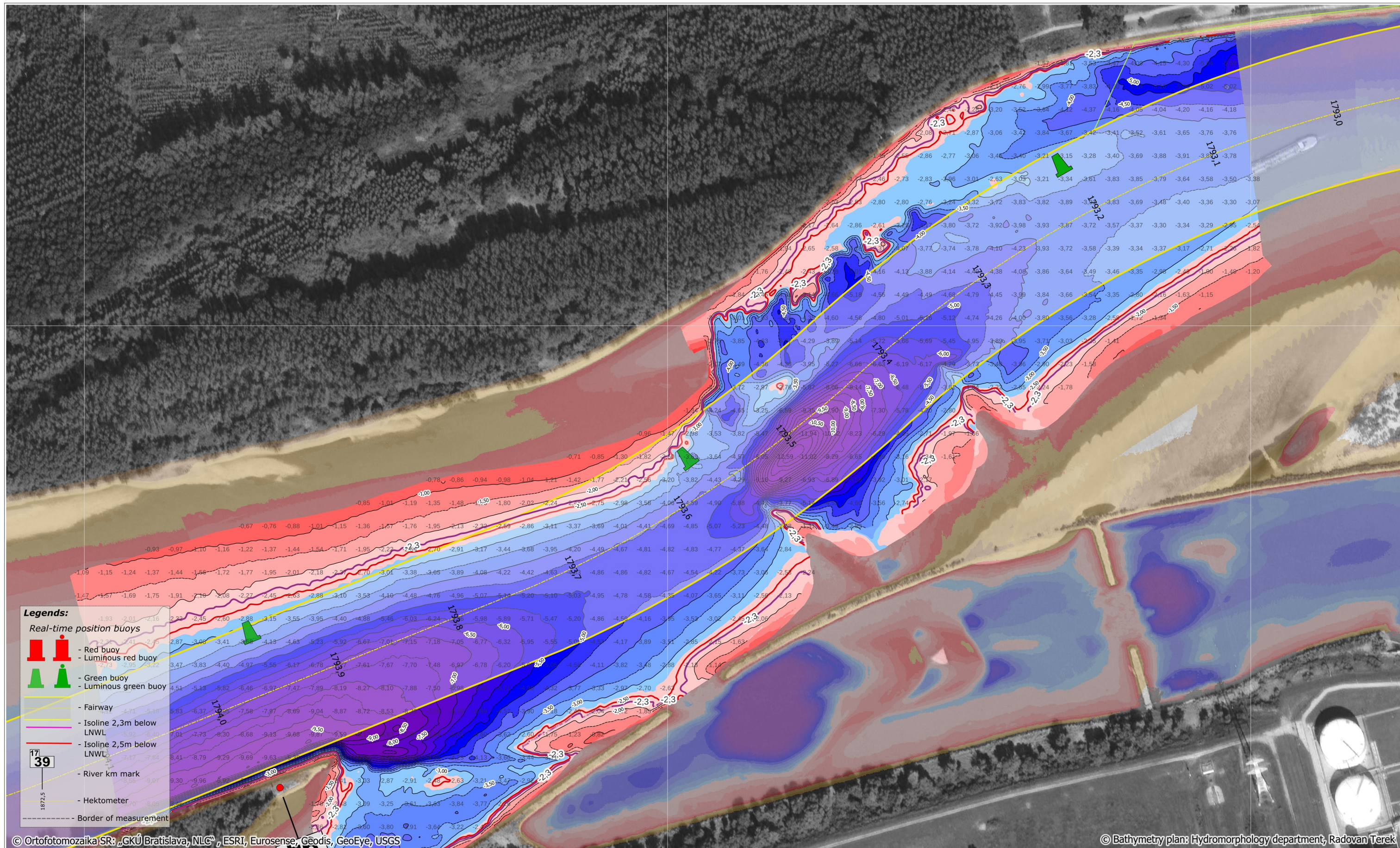
709000

709500

710000

5291500

5291500



**Legends:**

- Real-time position buoys
  - Red buoy
  - Luminous red buoy
  - Green buoy
  - Luminous green buoy
- Fairway
- Isoline 2,3m below LNWL
- Isoline 2,5m below LNWL
- River km mark
- Hektometer
- Border of measurement

© Ortofotomozaika SR, GKÚ Bratislava, NLG, ESRI, Eurosense, Geodis, GeoEye, USGS

© Bathymetry plan: Hydromorphology department, Radovan Terek

709000

709500

710000



SLOVENSKÝ  
VODOHOSPODÁRSKY  
PODNIK, štátny podnik  
Povodie Dunaja, odštepny závod

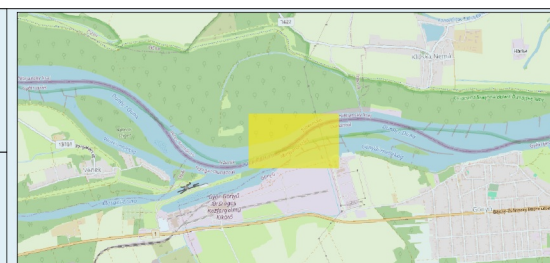
Martinská 49, 821 05 Bratislava  
tel.č.: 02/60 292 495  
email: Hydromorfologia\_BA@svp.sk

## Critical sections of the Danube River

### Klížská Nemá 2

date of measurement :	05.06.2026	gauge value :	Gönyű 110 cm	elevation system/ reduced level:	LNWL2022
date of processing :	14.06.2026	discharge :	Medveďov Q=1620m <sup>3</sup>	coordinate system:	UTM 33N

sheet:  
DIN-A3  
rkm:  
1793.9 - 1793.3  
page:  
10/23



100 0 100 200 m

MultiBeam 1:3 000

depth below:  
LNWL2022  
DEM

W N E S