

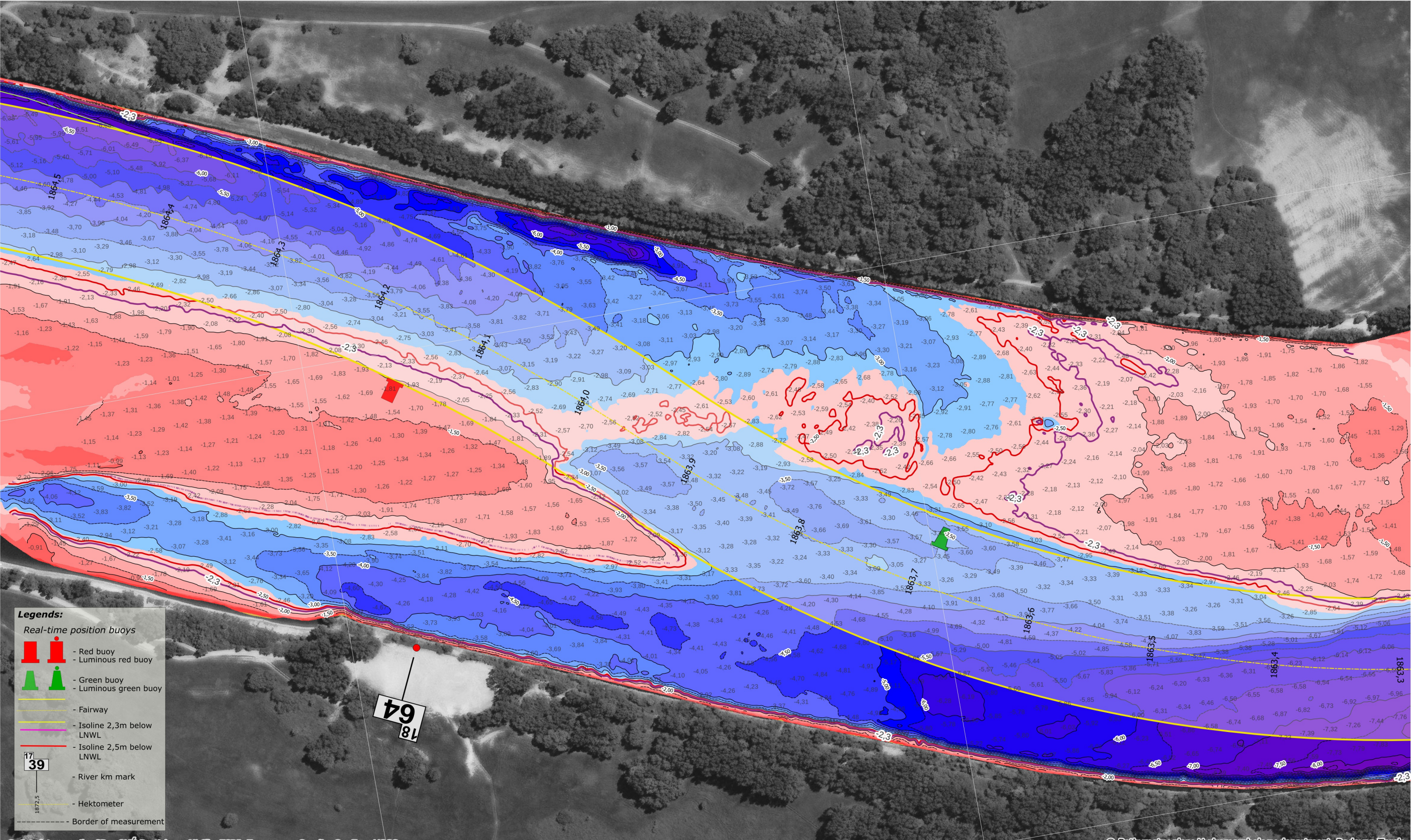
5331500

5331000

659500

659500

659000



**Legends:**

- Real-time position buoys
  - Red buoy
  - Luminous red buoy
  - Green buoy
  - Luminous green buoy
- Fairway
- Isoline 2,3m below LNWL
- Isoline 2,5m below LNWL
- River km mark
- Hektometer
- Border of measurement

© Ortófotomozaika SR, GKÚ Bratislava, NLC, ESRI, Eurosense, Geodis, GeoEye, USGS

© Bathymetry plan: Hydromorphology department, Radovan Terek

5331500

659000 5331000



SLOVENSKÝ  
VODOHOSPODÁRSKY  
PODNIK, štátny podnik  
Povodie Dunaja, odštepny závod

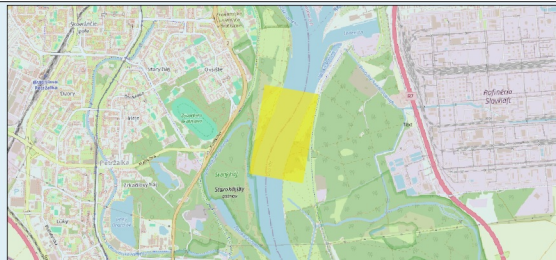
Martinská 49, 821 05 Bratislava  
tel.č.: 02/60 292 495  
email: Hydromorfologia\_BA@svp.sk

## Critical sections of the Danube River

### Víče Hrdlo

date of measurement :	20.05.2026	gauge value :	Bratislava 293 cm	elevation system/ reduced level:	LNWL-DK96
date of processing :	24.05.2026	discharge :	Devín Q=1124m <sup>3</sup>	coordinate system:	UTM 33N

sheet: DIN-A3  
rkm: 1864.3 - 1863.8  
page: 5/23



100 0 100 200 m

MultiBeam 1:3 000

depth below:  
LNWL-DK96  
DEM

<math>< -50</math>  
 -20 -50  
 -9.0 -20  
 -8.0 -9.0  
 -7.5 -8.0  
 -6.5 -7.5  
 -6.0 -6.5  
 -5.5 -6.0  
 -5.0 -5.5  
 -4.5 -5.0  
 -4.0 -4.5  
 -3.5 -4.0  
 -3.0 -3.5  
 -2.7 -3.0  
 -2.0 -2.7  
 -1.5 -2.0  
 -1.0 -1.5  
 -0.5 -1.0  
 0.0 -0.5  
 0.5 0.0  
 1.0 0.5  
 1.5 1.0  
 > 5.0