

ENC Bathymetry Plotter Report Report

Created on 29.03.2019 13:07 ENC Bathymetry Plotter Report (1.0.2.10) Windows 8.1 6.3 Java 1.8.0_71

Type of Generalization

Nautical Generalization

Configuration

| Min. Z [m] | Max. Z [m] | Generalization | Max. dZ [m] |
|------------|------------|----------------|-------------|
| -11.32 | -0.54 | None | 0.00 |

Included contour Lines

1 1.5 2 2.5 3 3.5 4 4.5 5 5.5 6 6.5 7 7.5 8 8.5 9 9.5 10 10.5 11

Depth Values (shallow)

Radial distance [m]: 50.00

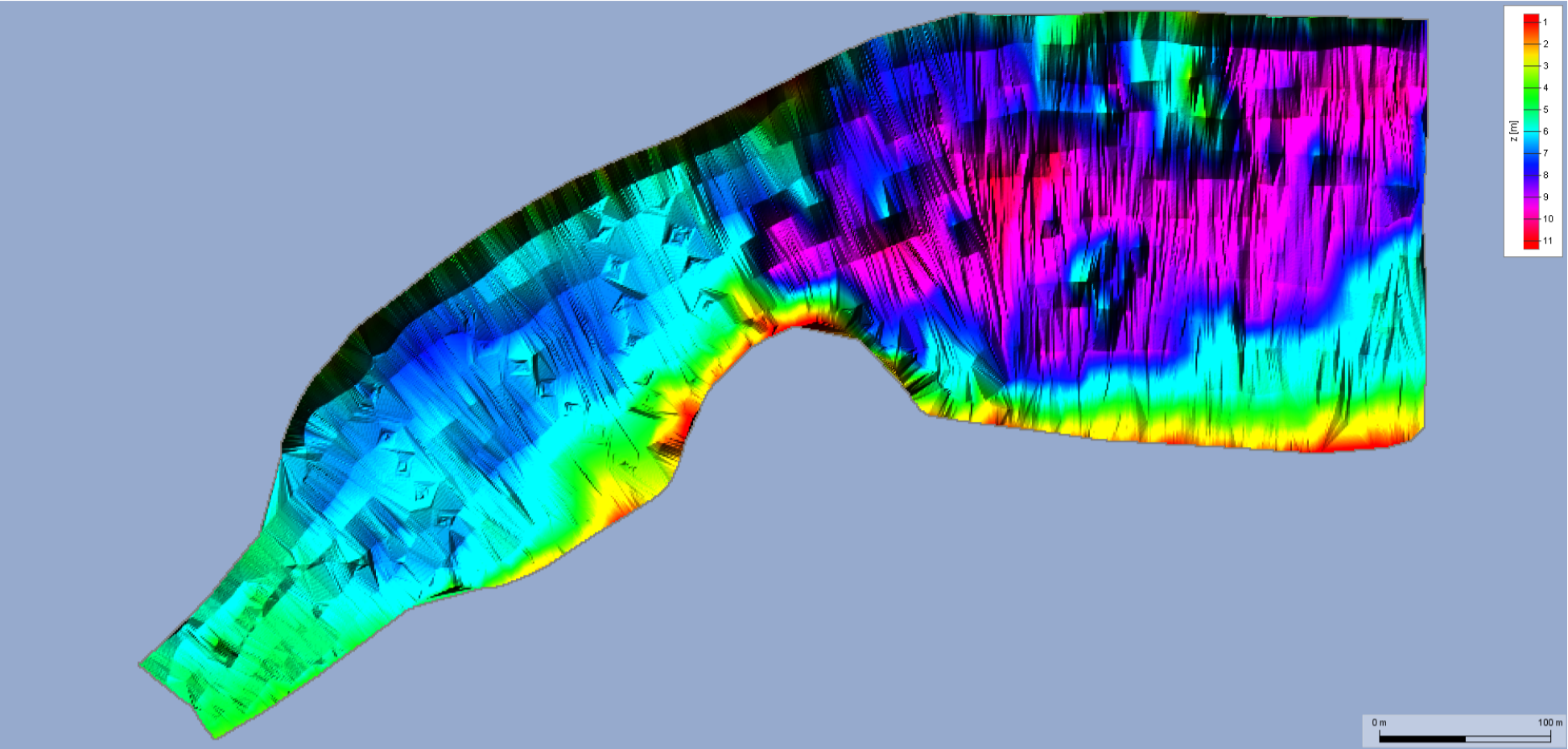
Depth Values (deep)

Radial distance [m]: 50.00

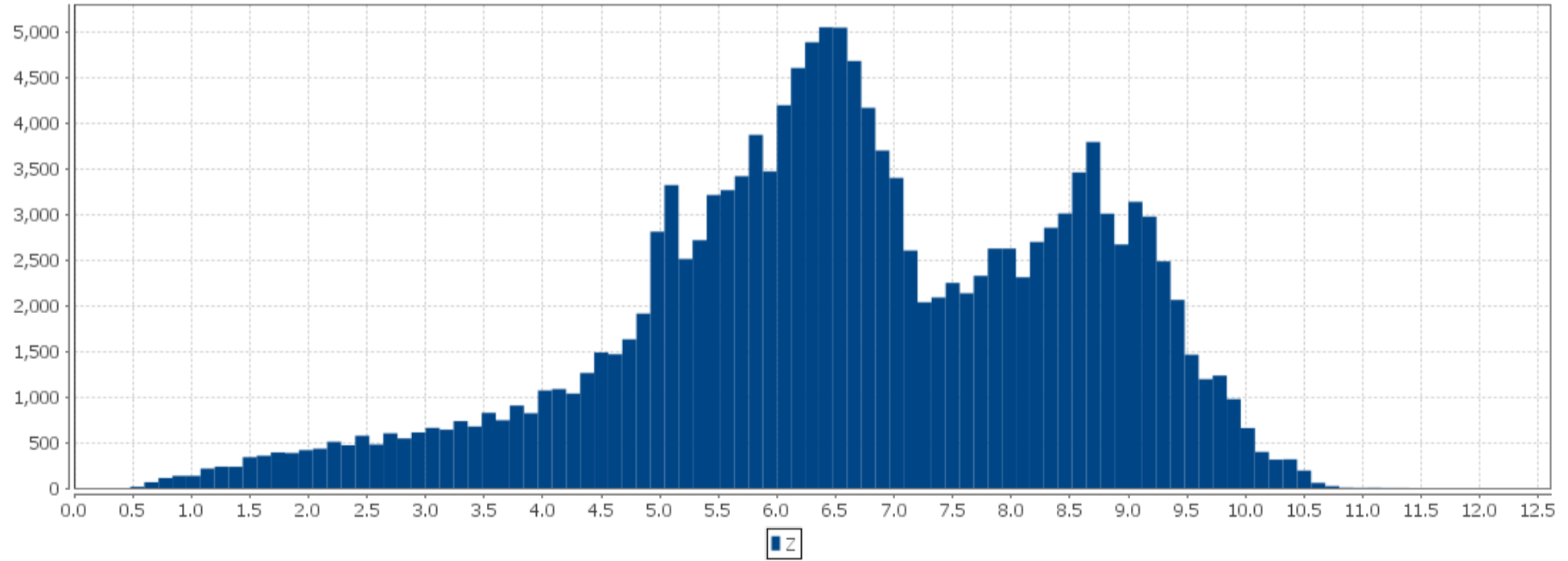
Overview

| Property | Input Data | Differences | Nautical Model | Depth Values (shallow) | Depth Values (deep) |
|------------------|------------|-------------|----------------|------------------------|---------------------|
| Min. Z | 0.54 | -0.00 | 0.54 | 0.57 | 1.91 |
| Max. Z | 11.32 | -0.00 | 11.32 | 8.89 | 11.32 |
| Number of points | 328422.00 | 328422.00 | 328422.00 | 60.00 | 59.00 |

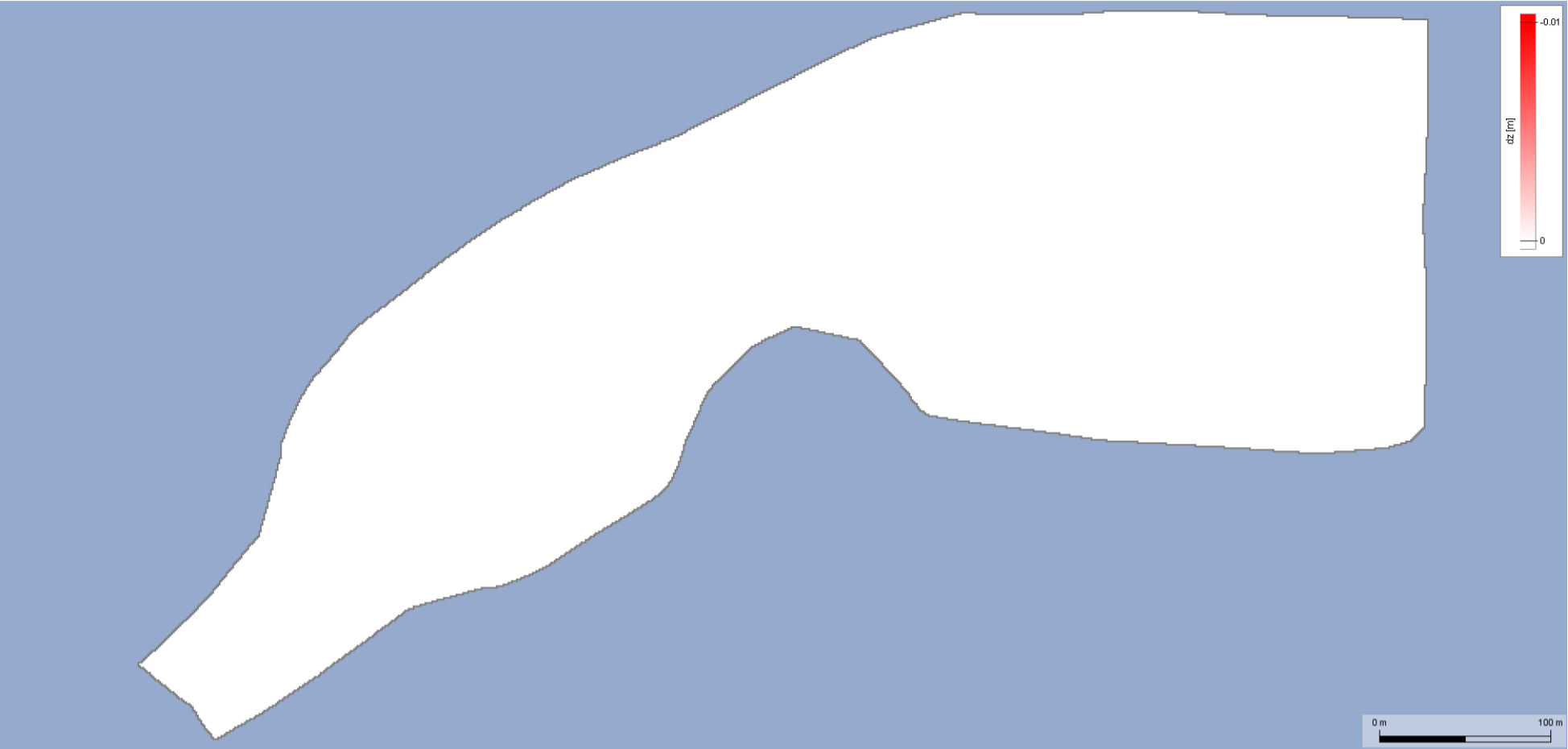
Input Data



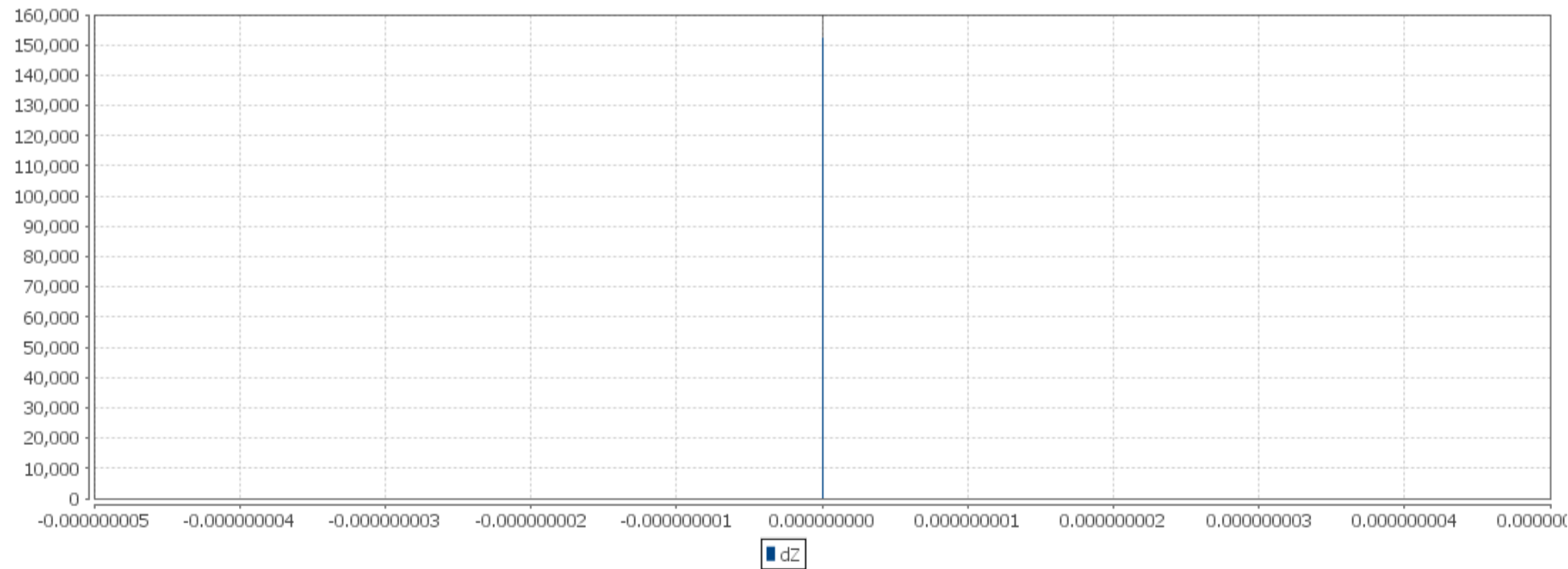
| Property | Value |
|------------------|------------------------------------|
| Name | navodari Cellsize: 1.0 [m] |
| Min. X | 629710.00 |
| Min. Y | 4909070.00 |
| Max. X | 630471.00 |
| Max. Y | 4909500.00 |
| Min. Z | 0.54 |
| Max. Z | 11.32 |
| Number of points | 328422.00 |
| CRS | WGS 84 / UTM zone 35N (EPSG:32635) |



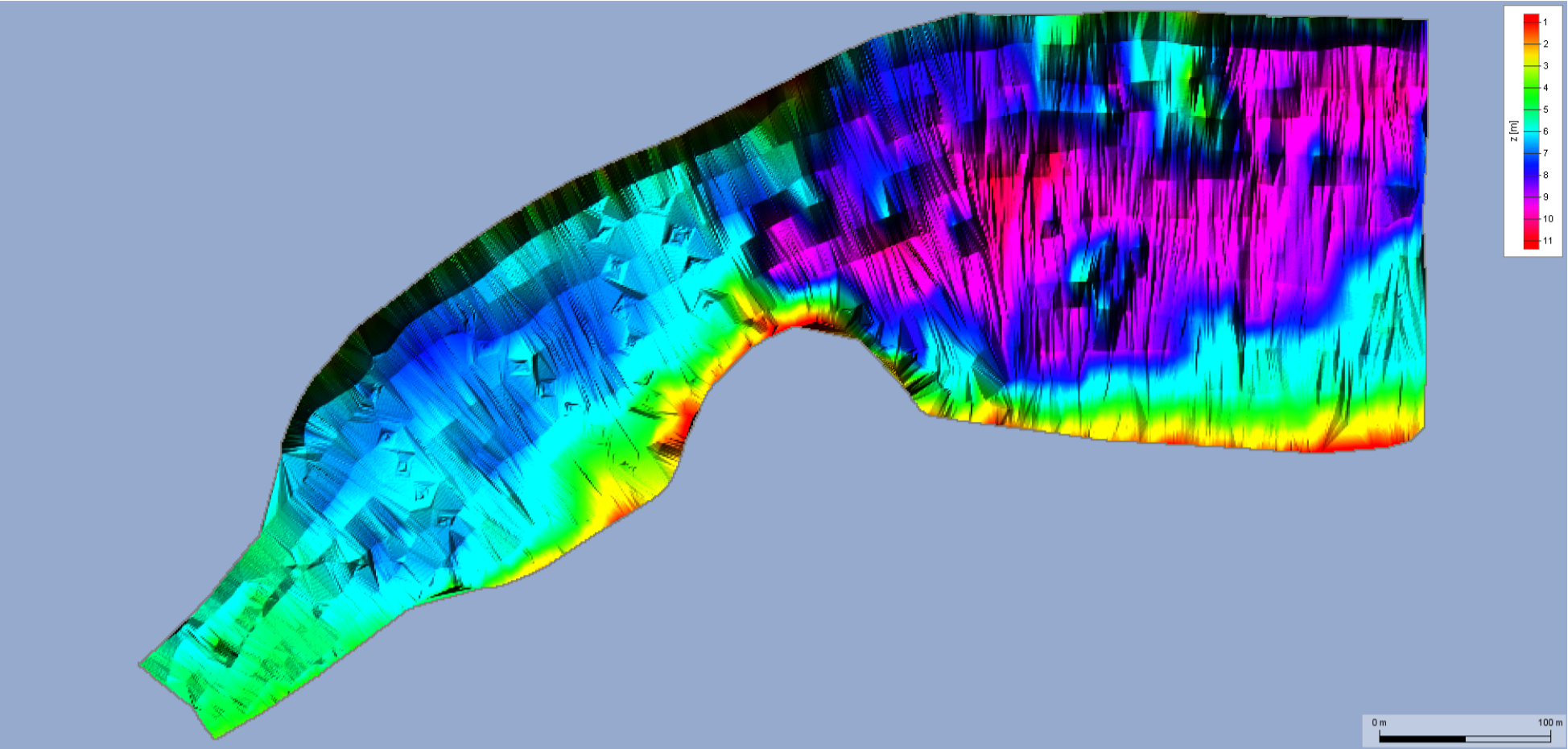
Differences



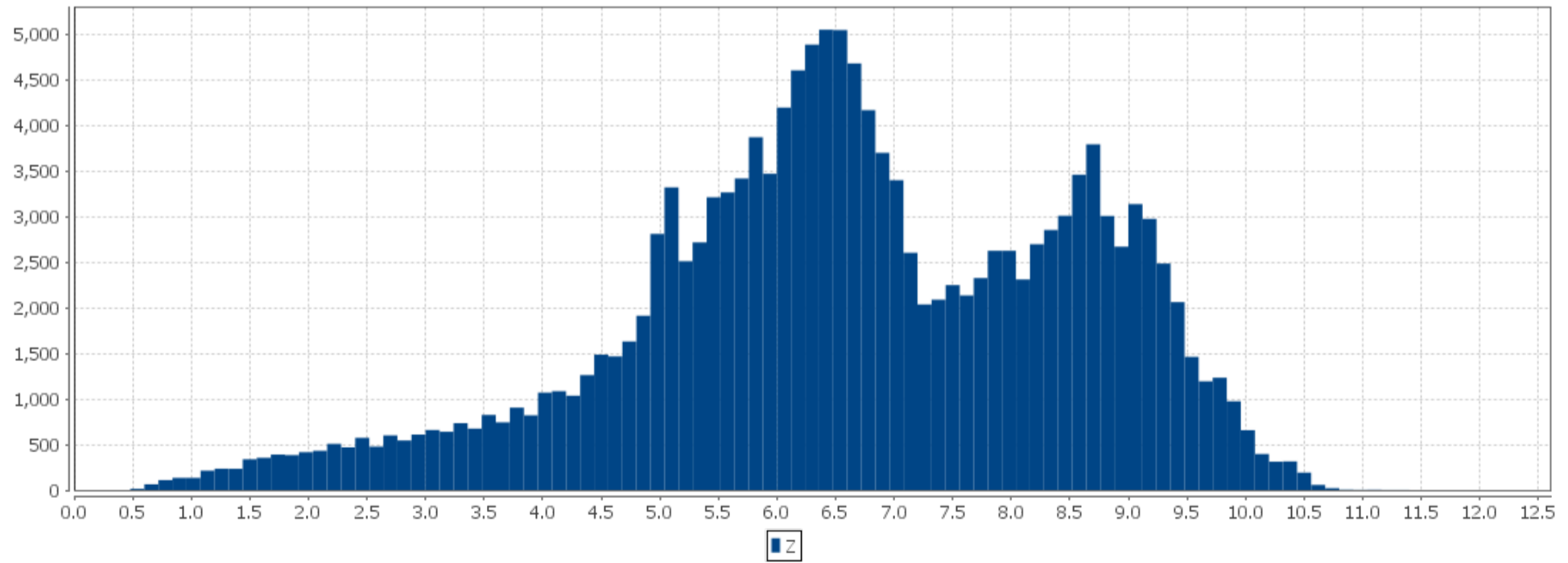
| Property | Value |
|------------------|--|
| Name | navodari_Differences Cellsize: 1.0 [m] |
| Min. X | 629710.00 |
| Min. Y | 4909070.00 |
| Max. X | 630471.00 |
| Max. Y | 4909500.00 |
| Min. Z | -0.00 |
| Max. Z | -0.00 |
| Number of points | 328422.00 |
| CRS | WGS 84 / UTM zone 35N (EPSG:32635) |



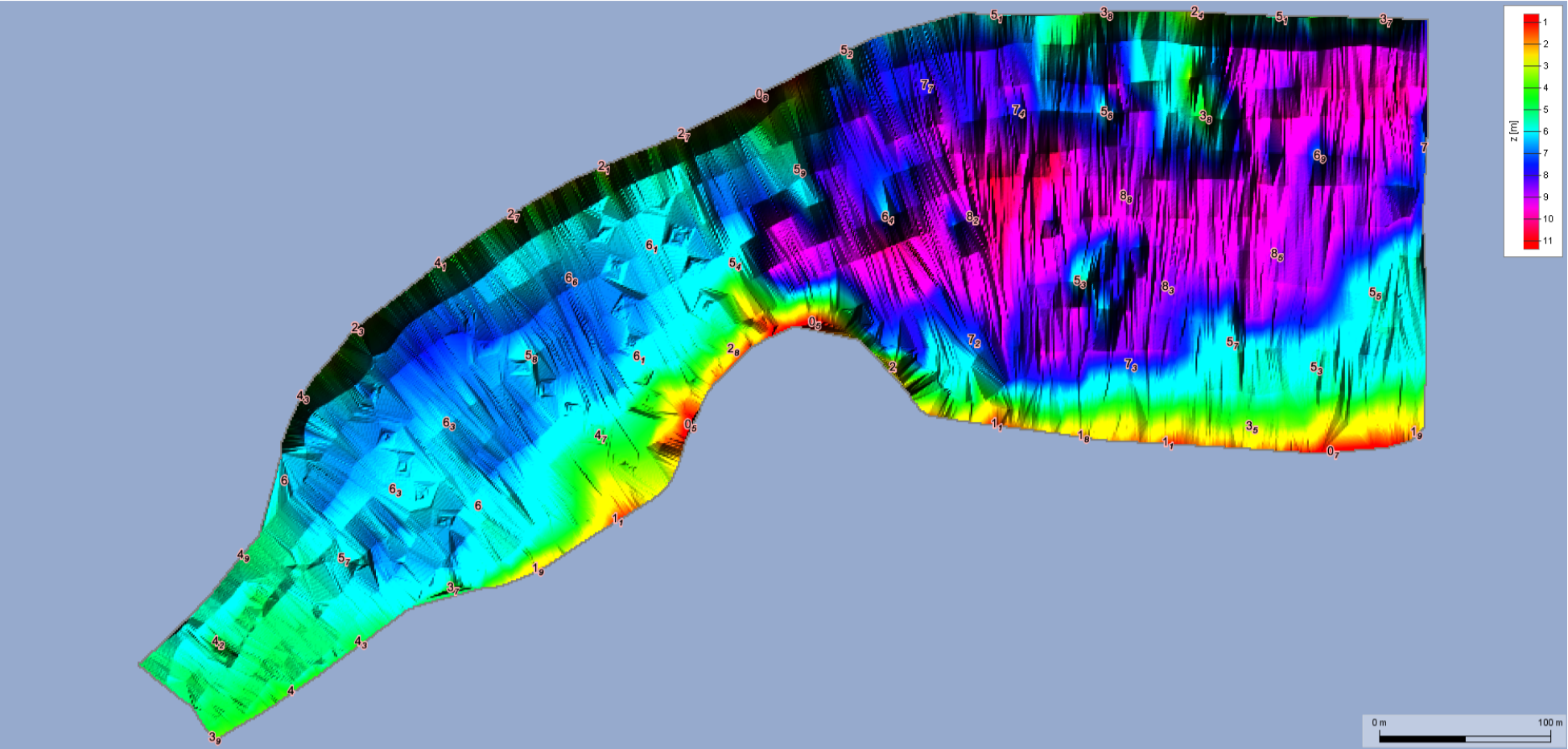
Nautical Model



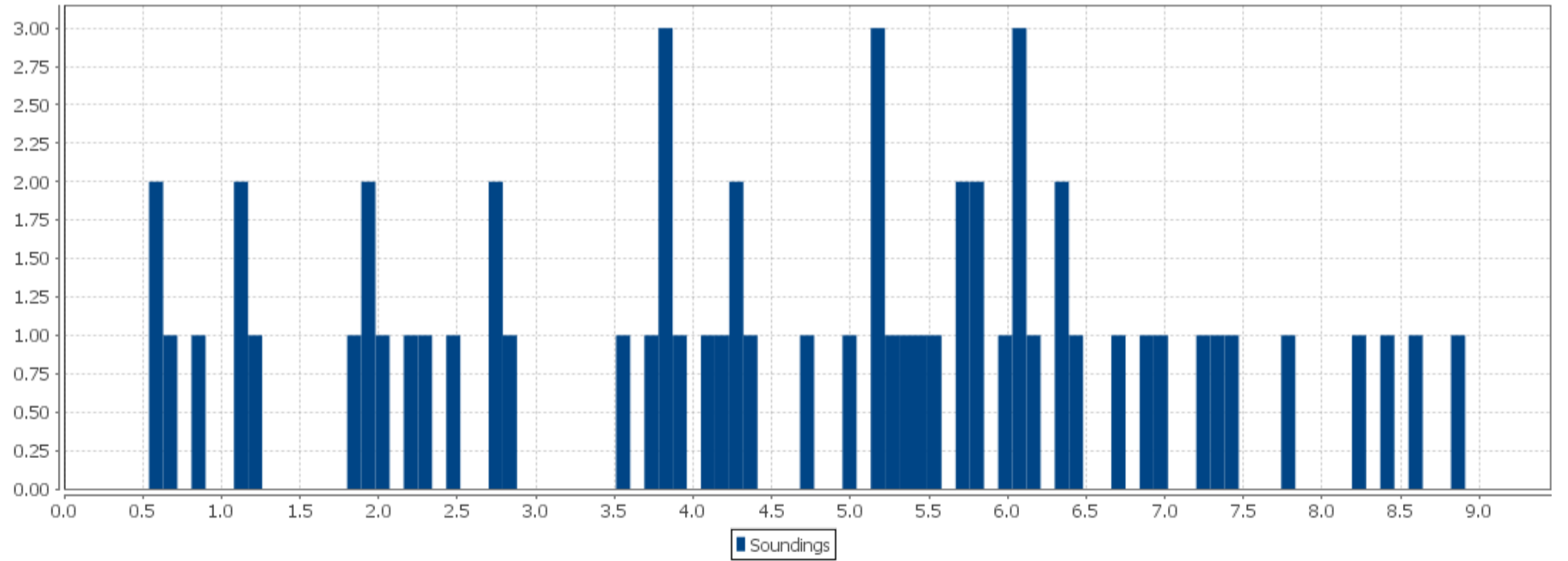
| Property | Value |
|------------------|--|
| Name | navodari_Generalized Cellsize: 1.0 [m] |
| Min. X | 629710.00 |
| Min. Y | 4909070.00 |
| Max. X | 630471.00 |
| Max. Y | 4909500.00 |
| Min. Z | 0.54 |
| Max. Z | 11.32 |
| Number of points | 328422.00 |
| CRS | WGS 84 / UTM zone 35N (EPSG:32635) |



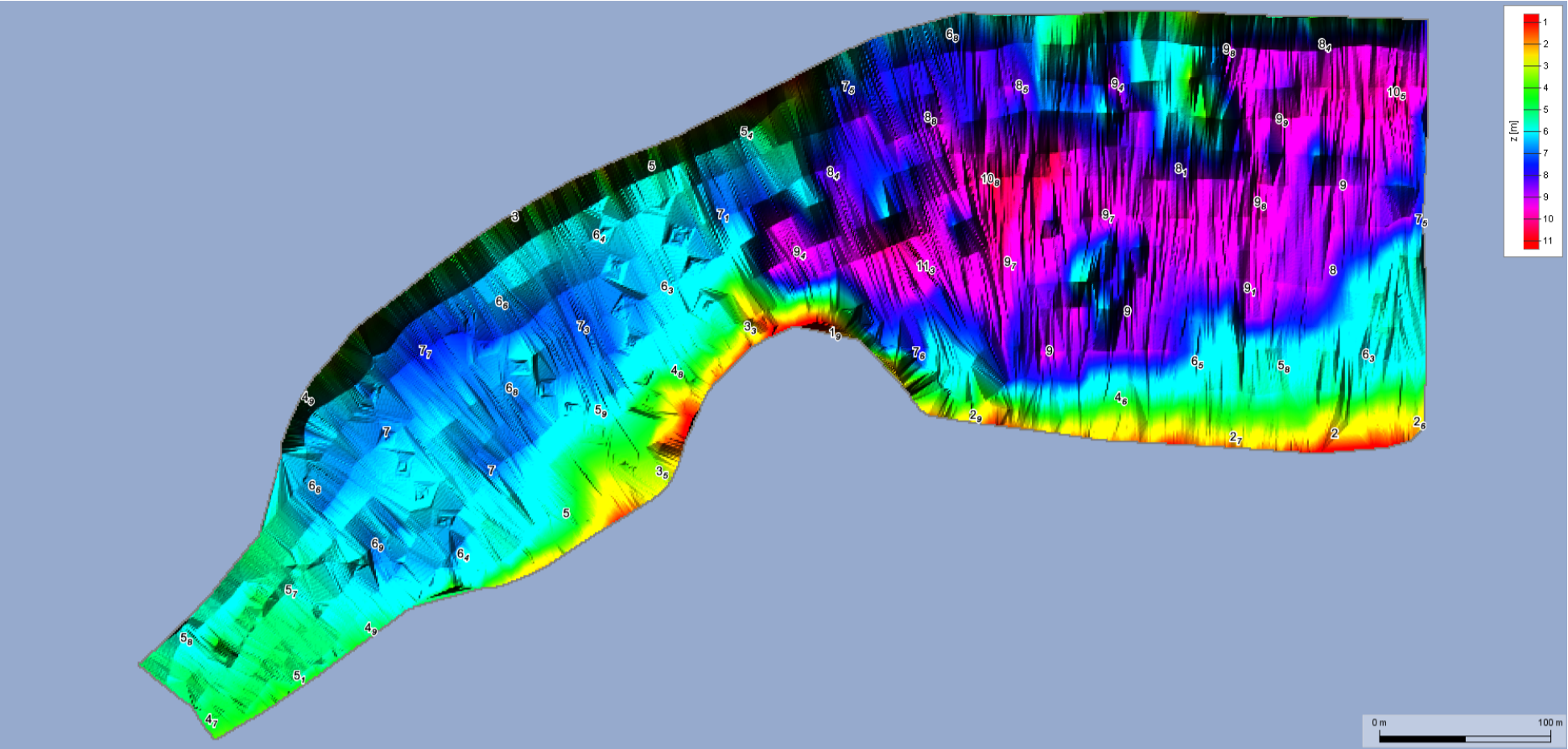
Depth Values (shallow)



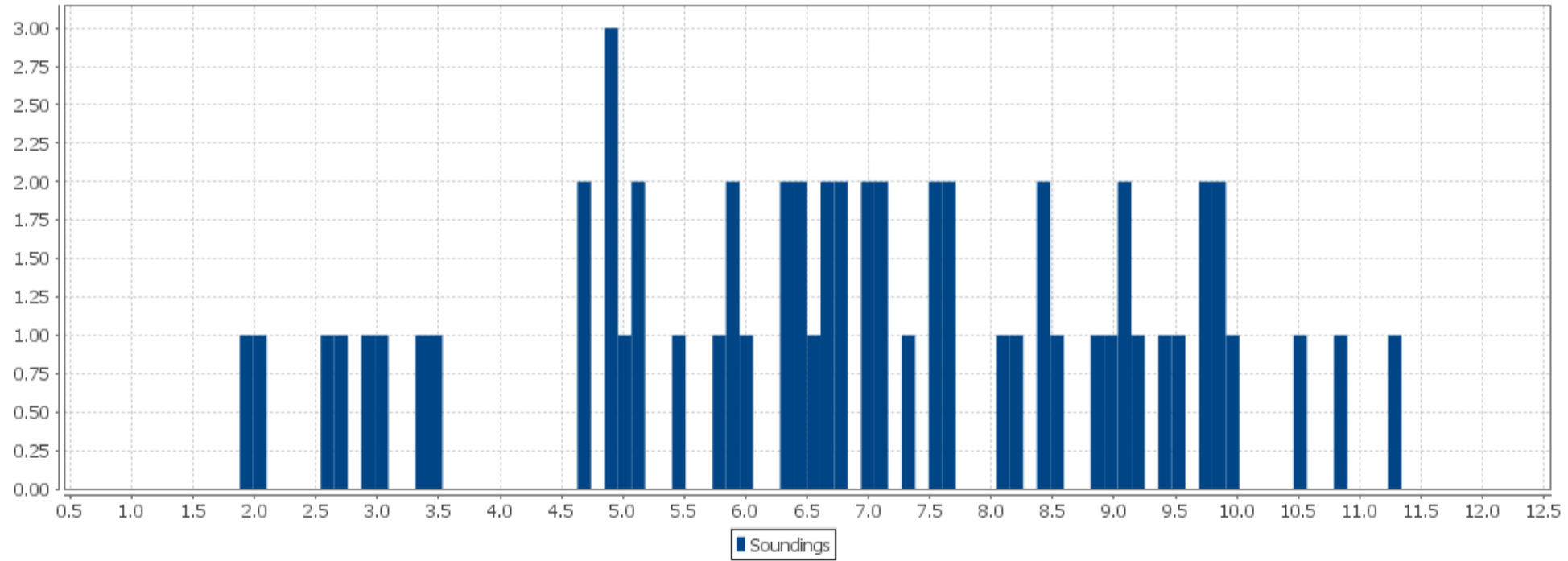
| Property | Value |
|------------------|------------------------|
| Name | Depth Values (shallow) |
| Min. X | 629756.00 |
| Min. Y | 4909072.00 |
| Max. X | 630468.00 |
| Max. Y | 4909498.00 |
| Min. Z | 0.57 |
| Max. Z | 8.89 |
| Number of points | 60.00 |



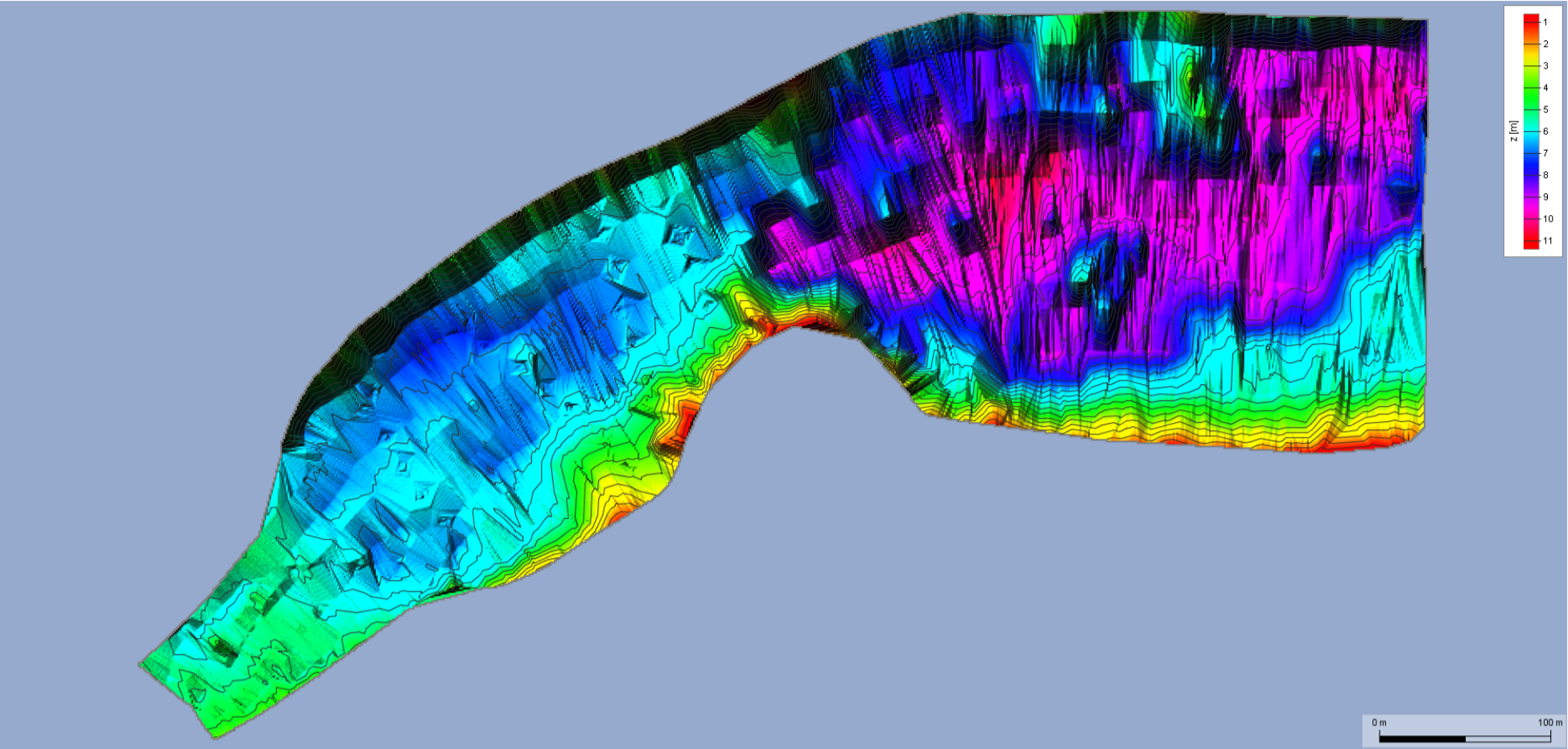
Depth Values (deep)



| Property | Value |
|------------------|---------------------|
| Name | Depth Values (deep) |
| Min. X | 629739.00 |
| Min. Y | 4909082.00 |
| Max. X | 630466.00 |
| Max. Y | 4909485.00 |
| Min. Z | 1.91 |
| Max. Z | 11.32 |
| Number of points | 59.00 |



Contour Lines



| Property | Value |
|------------------|---------------|
| Name | Contour Lines |
| Min. X | 629713.02 |
| Min. Y | 4909072.00 |
| Max. X | 630470.00 |
| Max. Y | 4909499.00 |
| Min. Z | 1.00 |
| Max. Z | 11.00 |
| Number of points | 98344.00 |

